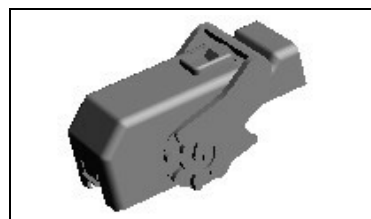




1452421-1 Product Details

[Share](#) [Print](#) [Email](#)



1452421-1

TE Internal Number: 1452421-1

Active

[View 3D PDF](#)

Multiple Contact Point (MCP) & MCON Contact Systems

Always EU RoHS/ELV Compliant (Statement of Compliance)

Product Highlights:

- MCON Product Line, Multiple Contact Point (MCP) Product Line
- Accessory
- Accessory Type = Cover
- 90° Cable Exit Angle
- 58 Positions

[View all Features](#)

Quick Links

- ▶ [Pricing & Availability](#)
- ▶ [Search for Tooling](#)
- ▶ [Product Feature Selector](#)
- ▶ [Contact Us About This Product](#)

[Add to My Part List](#) [Request Sample](#) [Find Similar Products](#) [Buy Product](#)

Documentation & Additional Information

Product Drawings:

- None Available

Catalog Pages/Data Sheets:

- None Available

Product Specifications:

- [154 pos. PCM connector \(96 and 58 pos.\) \(PDF, English\)](#)

Application Specifications:

- [154POS. CONNECTOR \(96POS. AND 58POS. CONNECTOR \) \(PDF, English\)](#)

Instruction Sheets:

- None Available

CAD Files: (CAD Format & Compression Information)

- [2D Drawing \(DXF, Version E1\)](#)
- [3D Model \(IGES, Version E1\)](#)
- [3D Model \(STEP, Version E1\)](#)

Related Products:

- [Tooling](#)

[List all Documents](#)

Product Features (Please use the Product Drawing for all design activity)

Product Type Features:

- Product Line = MCON, Multiple Contact Point (MCP)
- Product Type = Accessory
- Accessory Type = Cover
- Accessory Color = Black

Body Features:

- Cable Exit Angle = 90°
- Assembly Integration Feature = With
- Assembly Integration Type = Lever
- Used With = Socket Housing

Housing Features:

- Housing Material = PBT/ASA - GF20

Configuration Features:

- Number of Positions = 58

Industry Standards:

- [RoHS/ELV Compliance](#) = RoHS compliant, ELV compliant
- [Lead Free Solder Processes](#) = Not relevant for lead free process
- RoHS/ELV Compliance History = Always was RoHS compliant

Packaging Features:

- Packaging Method = Box/Carton
- Packaging Quantity = 300

Other:

- Brand = AMP

Corporate Information

- [About TE](#)
- [Investors](#)
- [News Room](#)
- [Supplier Portal](#)
- [Careers](#)
- [Terms & Conditions](#)
- [Privacy Policy](#)

Quick Links

- [Distributor Inventory](#)
- [Product Cross Reference](#)
- [Documents & Drawings](#)
- [Product Compliance Support Center](#)
- [Site Map](#)

Customer Support

- [Email or Chat With Us](#)
- [Find a Phone Number](#)
- [Knowledge Base](#)
- [Manage Your Account](#)

Keep Me Informed



Feedback

