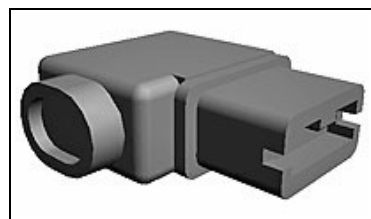




1717268-1 Product Details



1717268-1

Positive Lock Connectors

Always EU RoHS/ELV Compliant (Statement of Compliance)

Product Highlights:

- Connector
- Not Preloaded
- Connector Style = Plug
- Accepts Contact Gender = Receptacle
- Mating Area Interface Dimensions = 6.35 mm

[View all Features](#)

Quick Links

- ▶ [Pricing & Availability](#)
- ▶ [Search for Tooling](#)
- ▶ [Product Feature Selector](#)
- ▶ [Contact Us About This Product](#)

TE Internal Number: 1717268-1

Active

[View 3D PDF](#)

[Add to My Part List](#) [Request Sample](#) [Find Similar Products](#) [Buy Product](#)

Documentation & Additional Information

Product Drawings:

- [INSULATION SLEEVE INJECTION TYPE FOR 250 FLAG POSITI...](#) (PDF, English)

Catalog Pages/Data Sheets:

- None Available

Product Specifications:

- None Available

Application Specifications:

- None Available

Instruction Sheets:

- None Available

CAD Files: (CAD Format & Compression Information)

- [2D Drawing](#) (DXF, Version 0)
- [3D Model](#) (IGES, Version 0)
- [3D Model](#) (STEP, Version 0)

[List all Documents](#)

Additional Information:

- [Product Line Information](#)

Related Products:

- [Tooling](#)

Product Features (Please use the Product Drawing for all design activity)

Product Type Features:

- [Product Type](#) = Connector
- [Receptacle Style](#) = Flag
- [Color](#) = Blue
- [Keyed](#) = No

Dimensions:

- [Mating Area Interface Dimensions \(mm \[in\]\)](#) = 6.35 [.250]
- [Insulation Diameter \(mm \[in\]\)](#) = 2.80-5.30 [.110-.208]

Body Features:

- [Material](#) = Soft PVC
- [Position Keyed](#) = None

Contact Features:

- [Accepts Contact Gender](#) = Receptacle

Housing Features:

- [Connector Style](#) = Plug

Configuration Features:

- [Preloaded](#) = No
- [Number of Positions](#) = 1

Industry Standards:

- [RoHS/ELV Compliance](#) = RoHS compliant, ELV compliant
- [Lead Free Solder Processes](#) = Not relevant for lead free process
- [RoHS/ELV Compliance History](#) = Always was RoHS compliant
- [UL Flammability Rating](#) = UL 94V-2

Environmental:

- [Operating Temperature \(°C\)](#) = -40 - +105

Other:

- [Line](#) = AMP POSITIVE LOCK EX Series
- [Brand](#) = AMP

Corporate Information

- [About TE](#)
- [Investors](#)
- [News Room](#)

Quick Links

- [Distributor Inventory](#)
- [Product Cross Reference](#)
- [Documents & Drawings](#)

Customer Support

- [Email or Chat With Us](#)
- [Find a Phone Number](#)
- [Knowledge Base](#)

Keep Me Informed



[Supplier Portal](#)

[Careers](#)

[Terms & Conditions](#)

[Privacy Policy](#)

[AODA Accessibility Policy](#)

[AODA Multi-Year Accessibility
Plan](#)

[Product Compliance Support Center](#)

[Site Map](#)

[Manage Your Account](#)

