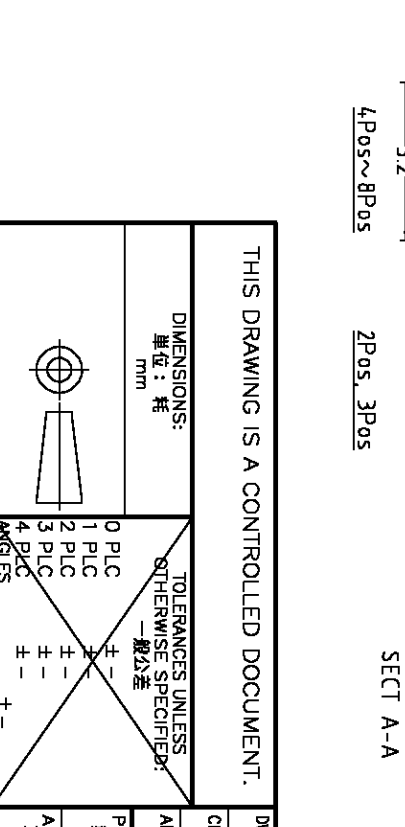
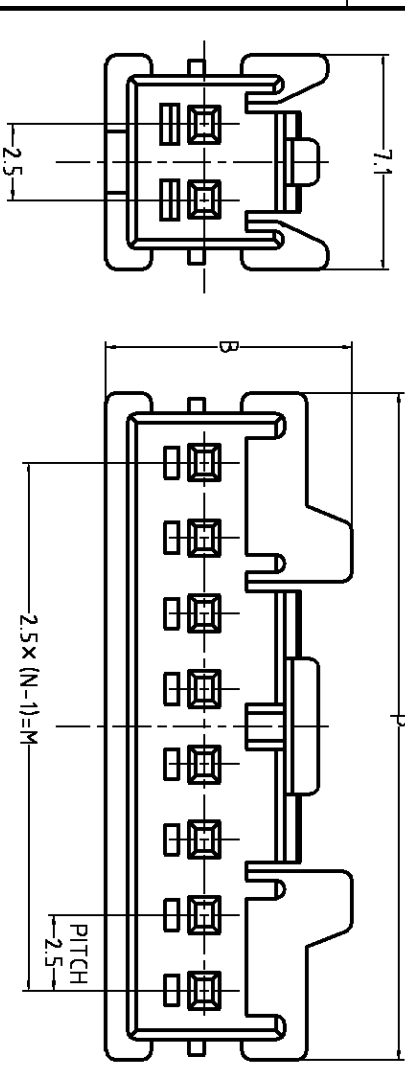
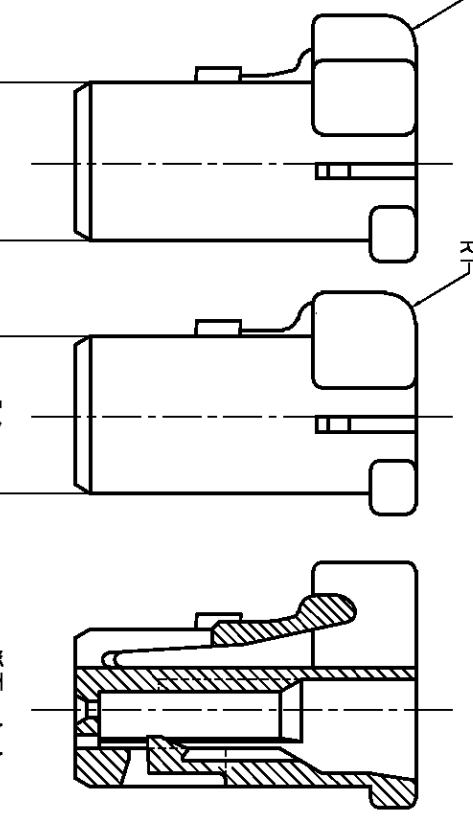
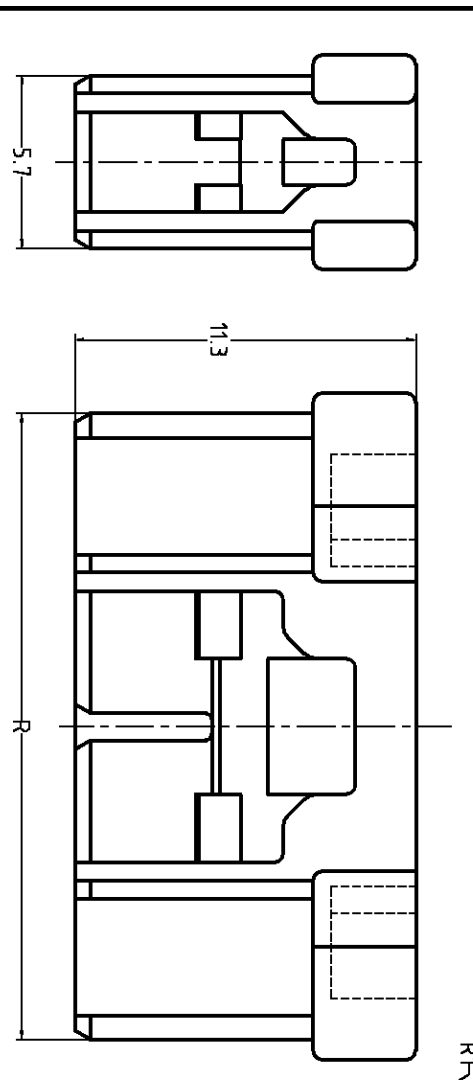
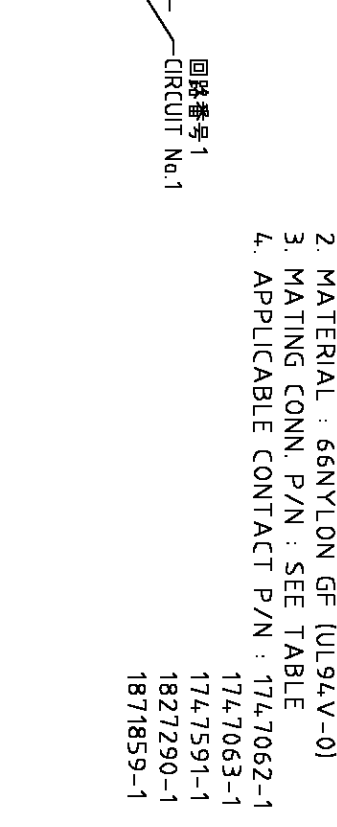
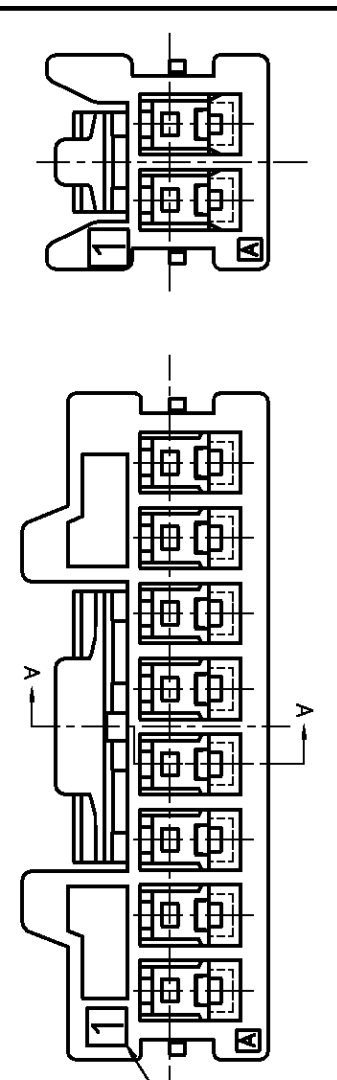
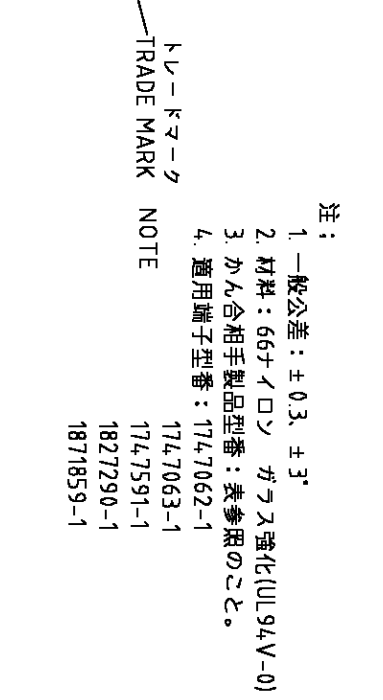
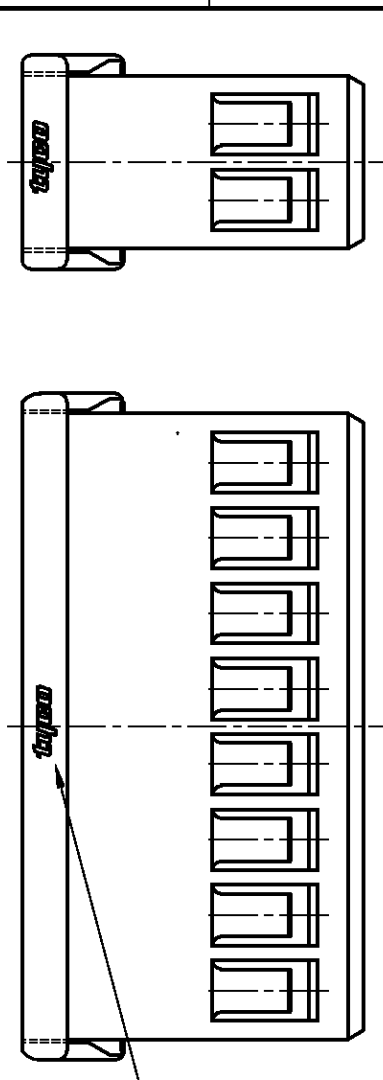


(2 極)
(2 Pos)



- 注:
1. 一般公差: ± 0.3 , $\pm 3^\circ$
 2. 材料: 66+ α ロソ ガラス強化 (UL94V-0)
 3. かん合相手製品型番: 表参照のこと。
 4. 適用端子型番: 174,7062-1

- TRADE MARK NOTE
- 174,7063-1
174,7591-1
182,7290-1
187,1859-1

1. GENERAL TOLERANCE: ± 0.3 , $\pm 3^\circ$
2. MATERIAL: 66NYLON GF (UL94V-0)
3. MATING CONN. P/N: SEE TABLE
4. APPLICABLE CONTACT P/N: 174,7062-1
174,7063-1
174,7591-1
182,7290-1
187,1859-1

X-174,7067-8	20.8	22.1	17.5	8.15	8	黄 (YELLOW)	
						青 (BLUE)	赤 (RED)
X-174,7067-7	18.3	19.6	15	7.85	7	黄 (YELLOW)	3-174,7066-8
X-1871843-8	20.8	22.1	17.5	8.15	8	青 (BLUE)	2-174,7066-8
X-174,7067-8						赤 (RED)	1-174,7066-8
X-174,7067-7	18.3	19.6	15	7.85	7	自然色 (NATURAL)	174,7066-8
X-174,7067-7	18.3	19.6	15	7.85	7	黄 (YELLOW)	3-174,7066-7
X-174,7067-7	18.3	19.6	15	7.85	7	青 (BLUE)	2-174,7066-7
X-174,7067-7	18.3	19.6	15	7.85	7	赤 (RED)	1-174,7066-7
X-174,7067-7	18.3	19.6	15	7.85	7	自然色 (NATURAL)	174,7066-7
X-1871843-6	15.8	17.1	12.5	7.7	6	黄 (YELLOW)	3-174,7066-6
X-174,7067-6	15.8	17.1	12.5	7.7	6	青 (BLUE)	2-174,7066-6
X-174,7067-6	15.8	17.1	12.5	7.7	6	赤 (RED)	1-174,7066-6
X-174,7067-6	15.8	17.1	12.5	7.7	6	自然色 (NATURAL)	174,7066-6
X-1871843-5	13.3	14.6	10	7.65	5	黄 (YELLOW)	3-174,7066-5
X-174,7067-5	13.3	14.6	10	7.65	5	青 (BLUE)	2-174,7066-5
X-174,7067-5	13.3	14.6	10	7.65	5	赤 (RED)	1-174,7066-5
X-174,7067-5	13.3	14.6	10	7.65	5	自然色 (NATURAL)	174,7066-5
X-1871843-4	10.8	12.1	7.5	7.45	4	黄 (YELLOW)	3-174,7066-4
X-174,7067-4	10.8	12.1	7.5	7.45	4	青 (BLUE)	2-174,7066-4
X-174,7067-4	10.8	12.1	7.5	7.45	4	赤 (RED)	1-174,7066-4
X-174,7067-4	10.8	12.1	7.5	7.45	4	自然色 (NATURAL)	174,7066-4
X-1871843-3	8.3	9.6	5	7.35	3	黄 (YELLOW)	3-174,7066-3
X-174,7067-3	8.3	9.6	5	7.35	3	青 (BLUE)	2-174,7066-3
X-174,7067-3	8.3	9.6	5	7.35	3	赤 (RED)	1-174,7066-3
X-174,7067-3	8.3	9.6	5	7.35	3	自然色 (NATURAL)	174,7066-3
X-1871843-2	5.9	7.1	2.5	7.35	2	黒 (BLACK)	4-174,7066-2
X-174,7067-2	5.9	7.1	2.5	7.35	2	黄 (YELLOW)	3-174,7066-2
X-174,7067-2	5.9	7.1	2.5	7.35	2	青 (BLUE)	2-174,7066-2
X-174,7067-2	5.9	7.1	2.5	7.35	2	赤 (RED)	1-174,7066-2
X-174,7067-2	5.9	7.1	2.5	7.35	2	自然色 (NATURAL)	174,7066-2

THIS DRAWING IS A CONTROLLED DOCUMENT.

DIMENSIONS: 単位: 特 mm

TOLERANCES UNLESS OTHERWISE SPECIFIED: 一般公差

0 PLC	\pm
1 PLC	\pm
2 PLC	\pm
3 PLC	\pm
4 PLC	\pm
ANGLES	\pm
FINISH 仕上	-

MATERIAL 材料 SEE NOTE

THIS DRAWING IS A CONTROLLED DOCUMENT.

DMN T. HATANO 09JUN2004

CHK A. OISHI 09JUN2004

APVD N. YAMASAKI 09JUN2004

PRODUCT SPEC 製品規格 108-5992, 108-78307

APPLICATION SPEC 取付適用規格 14-5359

WEIGHT -

CUSTOMER DRAWING

tyco Electronics Tyco Electronics AMP K.K. Kawasaki, Japan

GRACE INERTIA CONNECTOR 2.5 PLUG HSG

SIZE A3 CAGE CODE 00779 DRAWING NO. 1747066

SCALE 4.1 SHEET 1 OF 1 REV C

REVISIONS

REV	DESCRIPTION	DATE	DMN	APVD
1	REVISD ECR-06-013617	06JUN'06	J.S	N.Y