



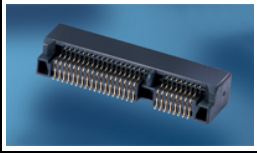
Have a Question?
Chat with a Product Information Specialist

What can we help you find?

[Products](#) [Industries](#) [Resources](#) [About TE](#) [My Account](#) [Innovation](#) [Support Center](#)

1775838-2 Product Details

[Share](#) [Print](#) [Email](#)



1775838-2

TE Internal Number: 1775838-2

Active

[View 3D PDF](#)

Memory Sockets

Always EU RoHS/ELV Compliant (Statement of Compliance)

Product Highlights:

- Socket Type = Memory Card
- Socket Style = Mini PCI Express
- Gold Flash Contact Plating, Mating Area, Material
- 52 Positions
- DRAM Type = Standard

[View all Features](#)

Quick Links

- ▶ [Pricing & Availability](#)
- ▶ [Search for Tooling](#)
- ▶ [Product Feature Selector](#)
- ▶ [Contact Us About This Product](#)

[Add to My Part List](#) [Request Sample](#) [Find Similar Products](#)

[Buy Product](#)

Documentation & Additional Information

Product Drawings:

- [2 in 1 mSATA & PCI-E Mini Card Connector, 5.6 mm Height \(TIF, English\)](#)

Catalog Pages/Data Sheets:

- [8-1773459-7_EXPRESS_MINI_CARD_AND_DISPLAY_MINI_CARD_...](#) (PDF, English)

Product Specifications:

- None Available

Application Specifications:

- None Available

Instruction Sheets:

- None Available

CAD Files: (CAD Format & Compression Information)

- [2D Drawing \(DXF, Version F\)](#)
- [3D Model \(IGES, Version F\)](#)
- [3D Model \(STEP, Version F\)](#)

[List all Documents](#)

Additional Information:

- [Product Line Information](#)

Related Products:

- [Tooling](#)

Product Features (Please use the Product Drawing for all design activity)

Product Type Features:

- Socket Style = Mini PCI Express
- [DRAM Type](#) = Standard
- PCB Mount Style = Surface Mount
- [Module Orientation](#) = Right Angle

Electrical Characteristics:

- [DRAM Voltage](#) = 1.5 V

Termination Features:

- [Insertion Style](#) = Cam-In

Body Features:

- Socket Type = Memory Card
- [Row-to-Row Spacing \(mm \[in\]\)](#) = 0.80 [0.031]
- [Ejector Location](#) = None
- Center Post = Without
- Mount Type = Printed Circuit Board

Contact Features:

- Contact Plating, Mating Area, Material = Gold Flash
- Contact Base Material = Phosphor Bronze

Housing Features:

- [Centerline \(mm \[in\]\)](#) = 3.65 [0.144]
- Housing Material = Thermoplastic - GF
- Housing Color = Black

Configuration Features:

- [Number of Positions](#) = 52
- [Stack Height \(mm \[in\]\)](#) = 5.60 [0.220]
- [Number of Rows](#) = Dual
- [Center Key \(mm \[in\]\)](#) = None

Industry Standards:

- [RoHS/ELV Compliance](#) = RoHS compliant, ELV compliant
- [Lead Free Solder Processes](#) = Reflow solder capable to 245°C, Reflow solder capable to 260°C
- [RoHS/ELV Compliance History](#) = Always was RoHS compliant

Operation/Application:

- [Application Type](#) = Mini-PCI Express

Packaging Features:

- [Packaging Method](#) = Tape & Reel

Other:

- Brand = TE Connectivity

Corporate Information

- [About TE](#)
- [Investors](#)
- [News Room](#)
- [Supplier Portal](#)
- [Careers](#)
- [Terms & Conditions](#)
- [Privacy Policy](#)

Quick Links

- [Distributor Inventory](#)
- [Product Cross Reference](#)
- [Documents & Drawings](#)
- [Product Compliance Support Center](#)
- [Site Map](#)

Customer Support

- [Email or Chat With Us](#)
- [Find a Phone Number](#)
- [Knowledge Base](#)
- [Manage Your Account](#)

Keep Me Informed

Receive TE News, Events & Technology Updates

Enter your email address

