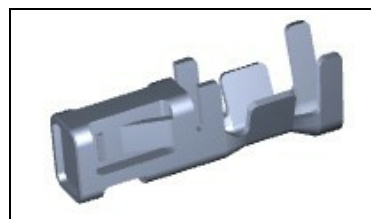




# 1971795-1 Product Details

[Share](#) [Print](#) [Email](#)



**1971795-1**

**2, 2.5, 3.3, 3.5, 3.96 & 6.2 Centerline 600 V, 12 A max.**

Always EU RoHS/ELV Compliant (Statement of Compliance)

**Product Highlights:**

- Universal Power Product Line
- Wire-to-Wire
- Applies To Wire/Cable
- Glow Wire Rating = Standard Part - Not Glow Wire
- Contact

[View all Features](#)

**Quick Links**

- ▶ Pricing & Availability
- ▶ Search for Tooling
- ▶ Product Feature Selector
- ▶ Contact Us About This Product

TE Internal Number: 1971795-1

Active

[Add to My Part List](#) [Request Sample](#) [Find Similar Products](#) [Buy Product](#)

Documentation & Additional Information	
Documents are temporarily unavailable. We are working hard to correct the problem. Please try again later.	<b>Related Products:</b> <ul style="list-style-type: none"> <li>• Tooling</li> </ul>

**Product Features (Please use the Product Drawing for all design activity)**

<p><b>Product Type Features:</b></p> <ul style="list-style-type: none"> <li>• Product Line = Universal Power</li> <li>• Product Type = Contact</li> <li>• Wire/Cable Type = Discrete Wire</li> <li>• Sealed = No</li> </ul> <p><b>Mechanical Attachment:</b></p> <ul style="list-style-type: none"> <li>• Contact Retention = With</li> <li>• Contact Retention Type = Locking Lance</li> </ul> <p><b>Electrical Characteristics:</b></p> <ul style="list-style-type: none"> <li>• Contact - Rated Current (A) = 1.5 - 3</li> <li>• Operating Voltage Reference = AC/DC</li> <li>• Operating Voltage (VAC) = 50</li> <li>• Operating Voltage (VDC) = 50</li> </ul> <p><b>Termination Features:</b></p> <ul style="list-style-type: none"> <li>• Wire/Cable Size (mm<sup>2</sup>) = 0.079 - 0.38</li> <li>• Wire/Cable Size (AWG) = 22 - 28</li> <li>• Termination Method to Wire/Cable = Crimp</li> </ul> <p><b>Body Features:</b></p> <ul style="list-style-type: none"> <li>• Wire Type = Stranded</li> </ul> <p><b>Contact Features:</b></p> <ul style="list-style-type: none"> <li>• Contact Type = Socket</li> <li>• Contact Base Material = Copper Alloy</li> <li>• Contact Plating, Mating Area, Material = Pre-Tin</li> <li>• Contact Plating, Mating Area, Thickness (µm [µin]) = 2 [78.74]</li> <li>• Underplate Material = Nickel</li> <li>• Underplate Material Thickness (µm [µin]) = 0.80 [31.496]</li> </ul>	<p><b>Industry Standards:</b></p> <ul style="list-style-type: none"> <li>• <a href="#">RoHS/ELV Compliance</a> = RoHS compliant, ELV compliant</li> <li>• <a href="#">Lead Free Solder Processes</a> = Not reviewed for lead free solder process</li> <li>• RoHS/ELV Compliance History = Always was RoHS compliant</li> </ul> <p><b>Environmental:</b></p> <ul style="list-style-type: none"> <li>• Operating Temperature (°C [°F]) = -30 - +105 [-22 - +221]</li> </ul> <p><b>Conditions for Usage:</b></p> <ul style="list-style-type: none"> <li>• Applies To = Wire/Cable</li> <li>• Glow Wire Rating = Standard Part - Not Glow Wire</li> <li>• Accepts Wire Insulation Diameter, Range (mm [in]) = 1.08 - 1.50 [0.0425 - 0.059]</li> <li>• For Use With = Plug Housing</li> </ul> <p><b>Operation/Application:</b></p> <ul style="list-style-type: none"> <li>• Application Use = Wire-to-Wire</li> <li>• Contact Transmits (Typical Application) = Signal (Data)</li> </ul> <p><b>Packaging Features:</b></p> <ul style="list-style-type: none"> <li>• Packaging Method = Reel</li> <li>• Packaging Quantity = 9,000</li> </ul> <p><b>Other:</b></p> <ul style="list-style-type: none"> <li>• Brand = TE Connectivity</li> </ul>
---	--

Feedback

**Corporate Information**

- [About TE](#)
- [Investors](#)
- [News Room](#)
- [Supplier Portal](#)
- [Careers](#)
- [Terms & Conditions](#)
- [Privacy Policy](#)
- [AODA Accessibility Policy](#)
- [AODA Multi-Year Accessibility](#)

**Quick Links**

- [Distributor Inventory](#)
- [Product Cross Reference](#)
- [Documents & Drawings](#)
- [Product Compliance Support Center](#)
- [Site Map](#)

**Customer Support**

- [Email or Chat With Us](#)
- [Find a Phone Number](#)
- [Knowledge Base](#)
- [Manage Your Account](#)

**Keep Me Informed**



