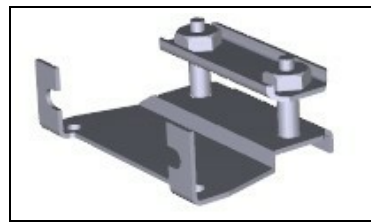


## 201237-1 Product Details

Share | Print | Email



**201237-1**

### M Series Connectors

Not EU RoHS or ELV Compliant (Find RoHS Compliant Alternates)

#### Product Highlights:

- Product Series = M Series
- Hardware
- Hardware Type = Strain Relief Clamp
- 90° Cable Exit Angle, 180° Cable Exit Angle
- Cable Opening Diameter = 19.81 x 8.51 mm

[View all Features](#)

#### Quick Links

- ▶ [Pricing & Availability](#)
- ▶ [Search for Tooling](#)
- ▶ [Product Feature Selector](#)
- ▶ [Contact Us About This Product](#)

TE Internal Number: 201237-1

Active

[Add to My Part List](#) | Request Sample | Find Similar Products | Buy Product

Documentation & Additional Information	
Documents are temporarily unavailable. We are working hard to correct the problem. Please try again later.	<b>Additional Information:</b> <ul style="list-style-type: none"> <li>• <a href="#">Product Line Information</a></li> </ul> <b>Related Products:</b> <ul style="list-style-type: none"> <li>• <a href="#">Tooling</a></li> </ul>

Product Features (Please use the Product Drawing for all design activity)	
<b>Product Type Features:</b> <ul style="list-style-type: none"> <li>• Product Series = M Series</li> <li>• <a href="#">Product Type</a> = Hardware</li> <li>• Thread Size = 4-40</li> <li>• Sealed = No</li> </ul> <b>Mechanical Attachment:</b> <ul style="list-style-type: none"> <li>• <a href="#">Hardware Type</a> = Strain Relief Clamp</li> <li>• <a href="#">Mounting Hardware</a> = U Bolt, Wire Guide, Protection Sleeve and Nut</li> </ul> <b>Dimensions:</b> <ul style="list-style-type: none"> <li>• <a href="#">Cable Opening Diameter (mm [in])</a> = 19.81 x 8.51 [.780 x .335]</li> <li>• <a href="#">Length (X-Axis) (mm [in])</a> = 30.16 [1.1874]</li> <li>• <a href="#">Width (Z-Axis) (mm [in])</a> = 16.76 [0.6598]</li> <li>• <a href="#">Profile Height (Y-Axis) (mm [in])</a> = 39.70 [1.563]</li> </ul> <b>Body Features:</b> <ul style="list-style-type: none"> <li>• <a href="#">Cable Exit Angle</a> = 90°, 180°</li> <li>• Mating Retention = Without</li> <li>• <a href="#">Strain Relief Type</a> = Short</li> <li>• <a href="#">Mounting Bracket Material</a> = Stainless Steel</li> </ul>	<b>Housing Features:</b> <ul style="list-style-type: none"> <li>• Mating Alignment = Without</li> </ul> <b>Configuration Features:</b> <ul style="list-style-type: none"> <li>• Strain Relief = With</li> </ul> <b>Industry Standards:</b> <ul style="list-style-type: none"> <li>• <a href="#">RoHS/ELV Compliance</a> = Not ELV/RoHS compliant</li> <li>• <a href="#">Lead Free Solder Processes</a> = Not relevant for lead free process</li> </ul> <b>Conditions for Usage:</b> <ul style="list-style-type: none"> <li>• For Use With = 20 Position Standard Connectors</li> </ul> <b>Packaging Features:</b> <ul style="list-style-type: none"> <li>• Packaging Method = Bag</li> <li>• Packaging Quantity = 1</li> </ul> <b>Other:</b> <ul style="list-style-type: none"> <li>• Brand = AMP</li> <li>• Comment = Hardware supplied unassembled.</li> </ul>

Feedback

<b>Corporate Information</b> <a href="#">About TE</a> <a href="#">Investors</a> <a href="#">News Room</a> <a href="#">Supplier Portal</a> <a href="#">Careers</a> <a href="#">Terms &amp; Conditions</a> <a href="#">Privacy Policy</a> <a href="#">AODA Accessibility Policy</a> <a href="#">AODA Multi-Year Accessibility Plan</a>	<b>Quick Links</b> <a href="#">Distributor Inventory</a> <a href="#">Product Cross Reference</a> <a href="#">Documents &amp; Drawings</a> <a href="#">Product Compliance Support Center</a> <a href="#">Site Map</a>	<b>Customer Support</b> <a href="#">Email or Chat With Us</a> <a href="#">Find a Phone Number</a> <a href="#">Knowledge Base</a> <a href="#">Manage Your Account</a>	<b>Keep Me Informed</b> 
-----------------------------------------------------------------------------------------------------------------------------------------------------------------------------------------------------------------------------------------------------------------------------------------------------------------------------------------------------------------	-------------------------------------------------------------------------------------------------------------------------------------------------------------------------------------------------------------------------------------	----------------------------------------------------------------------------------------------------------------------------------------------------------------------------------	-----------------------------

