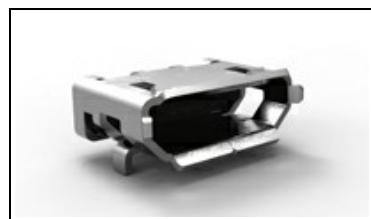




2040343-2 Product Details



2040343-2

TE Internal Number: 2040343-2

Active

Universal Serial Bus (USB) Connectors

Always EU RoHS/ELV Compliant (Statement of Compliance)

Product Highlights:

- USB 2.0 Industry Standard
- Size = Micro
- B Series
- Receptacle
- Without Locking Feature

[View all Features](#)

Quick Links

- ▶ [Pricing & Availability](#)
- ▶ [Search for Tooling](#)
- ▶ [Product Feature Selector](#)
- ▶ [Contact Us About This Product](#)

[Add to My Part List](#) [Request Sample](#) [Find Similar Products](#) [Buy Product](#)

Documentation & Additional Information

Documents are temporarily unavailable. We are working hard to correct the problem. Please try again later.

Related Products:

- [Tooling](#)

Product Features (Please use the Product Drawing for all design activity)

Product Type Features:

- Size = Micro
- Gender = Receptacle
- Orientation = Right Angle
- LED = Without
- PCB Mount Retention Type = Straight Leg

Mechanical Attachment:

- Mount Location = Top

Termination Features:

- Contact Termination Type = Surface Mount
- Termination Method = Surface Mount

Body Features:

- Locking Feature = Without
- [Panel Ground](#) = Without
- Shell Plating = Matte Tin
- Assembly Process Feature = Without Pick and Place Cover
- Locating Post(s) = Without

Contact Features:

- [Contact Plating](#), [Mating Area](#), [Material](#) = Gold
- [Contact Plating](#), [Mating Area](#), [Thickness](#) (µm [µin]) = 0.75 [29.52]

Housing Features:

- [Housing Color](#) = Black

Configuration Features:

- Number of Ports = 1
- Number of Positions = 5

Industry Standards:

- Industry Standard = USB 2.0
- [RoHS/ELV Compliance](#) = RoHS compliant, ELV compliant
- [Lead Free Solder Processes](#) = Reflow solder capable to 245°C, Reflow solder capable to 260°C
- [RoHS/ELV Compliance History](#) = Always was RoHS compliant

Conditions for Usage:

- Applies To = Printed Circuit Board

Packaging Features:

- [Packaging Method](#) = Tape & Reel

Other:

- [Series](#) = B
- [Brand](#) = AMP
- [Comment](#) = Mid Mount; With Laser Welding.

Feedback

Corporate Information

- [About TE](#)
- [Investors](#)
- [News Room](#)
- [Supplier Portal](#)
- [Careers](#)
- [Terms & Conditions](#)
- [Privacy Policy](#)
- [AODA Accessibility Policy](#)
- [AODA Multi-Year Accessibility Plan](#)

Quick Links

- [Distributor Inventory](#)
- [Product Cross Reference](#)
- [Documents & Drawings](#)
- [Product Compliance Support Center](#)
- [Site Map](#)

Customer Support

- [Email or Chat With Us](#)
- [Find a Phone Number](#)
- [Knowledge Base](#)
- [Manage Your Account](#)

Keep Me Informed



