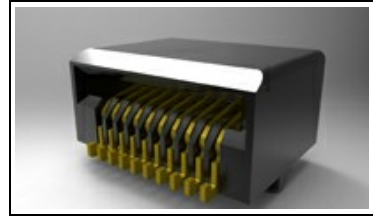


## 2170088-1 Product Details

[Share](#) [Print](#) [Email](#)



**2170088-1**

### Pluggable Connectors, Cages & Accessories

Always EU RoHS/ELV Compliant (Statement of Compliance)

**Product Highlights:**

- zSFP+ Product Line
- Connector
- zSFP+ Application
- Connector Style = Receptacle
- Data Signal Rate = Up to 32 Gb/s

[View all Features](#)

**Quick Links**

- ▶ [Pricing & Availability](#)
- ▶ [Search for Tooling](#)
- ▶ [Product Feature Selector](#)
- ▶ [Contact Us About This Product](#)

TE Internal Number: 2170088-1

Preliminary

[View 3D PDF](#)

[Add to My Part List](#) [Request Sample](#) [Find Similar Products](#) [Buy Product](#)

### Documentation & Additional Information

**Product Drawings:**

- [ASSEMBLY DRAWING SMT,20POS,ZSFP+](#) (PDF, English)

**Catalog Pages/Data Sheets:**

- [1-1773707-6 zSFP+ Interconnect Brochure](#) (PDF, English)

**Product Specifications:**

- [ZSFP+0.8 MM, 25Gb/s SMT PT Connector](#) (PDF, English)

**Application Specifications:**

- [Small Form-Factor Pluggable \(SFP\), SFP+, and zSFP+ S...](#) (PDF, English)

**Instruction Sheets:**

- None Available

**CAD Files: (CAD Format & Compression Information)**

- [2D Drawing](#) (DXF, Version 1)
- [3D Model](#) (IGES, Version 1)
- [3D Model](#) (STEP, Version 1)

[List all Documents](#)

**Related Products:**

- [Tooling](#)

### Product Features (Please use the Product Drawing for all design activity)

**Product Type Features:**

- Product Line = zSFP+
- Product Type = Connector

**Mechanical Attachment:**

- PCB Mount = Double Sided (Belly-to-Belly)

**Electrical Characteristics:**

- Data Signal Rate (Gb/s) = Up to 32

**Termination Features:**

- Termination Method to PC Board = Surface Mount

**Dimensions:**

- Length (X-Axis) (mm [in]) = 11.00 [0.433]
- Width (Z-Axis) (mm [in]) = 7.87 [0.3098]
- Profile Height (Y-Axis) (mm [in]) = 5.35 [0.2106]

**Contact Features:**

- [Contact Plating, Mating Area, Material](#) = Gold or Gold Flash over Palladium Nickel
- Contact Base Material = Copper Alloy

**Housing Features:**

- Connector Style = Receptacle
- Housing Material = Liquid Crystal Polymer (LCP)
- Housing Color = Black

**Industry Standards:**

- [RoHS/ELV Compliance](#) = RoHS compliant, ELV compliant
- [Lead Free Solder Processes](#) = Reflow solder capable to 245°C, Reflow solder capable to 260°C
- RoHS/ELV Compliance History = Always was RoHS compliant
- UL Flammability Rating = UL 94V-0

**Conditions for Usage:**

- Applies To = Printed Circuit Board

**Operation/Application:**

- [Application](#) = zSFP+

**Packaging Features:**

- Packaging Method = Reel

**Other:**

- Brand = TE Connectivity

Feedback

