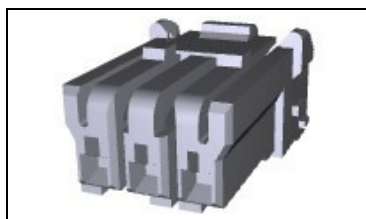




3-1565082-4 Product Details

[Share](#) [Print](#) [Email](#)


3-1565082-4

TE Internal Number: 3-1565082-4

Active

[View 3D PDF](#)

2, 2.5, 3.3, 3.5, 3.96 & 6.2 Centerline 600 V, 12 A max.

Always EU RoHS/ELV Compliant (Statement of Compliance)

Product Highlights:

- Universal Power Product Line
- Wire-to-Wire
- Applies To Wire/Cable
- Glow Wire Rating = Standard Part - Not Glow Wire
- Connector

[View all Features](#)
Quick Links

- ▶ [Pricing & Availability](#)
- ▶ [Search for Tooling](#)
- ▶ [View Mating Products \(2\)](#)
- ▶ [View Contacts \(4\)](#)
- ▶ [Product Feature Selector](#)
- ▶ [Contact Us About This Product](#)

[Add to My Part List](#) [Request Sample](#) [Find Similar Products](#) [Buy Product](#)

Documentation & Additional Information

Product Drawings:

- [GRACE INERTIA CONNECTOR 3.5 3POS PLUG HOUSING \(PDF, Japanese\)](#)

Catalog Pages/Data Sheets:

- [SOFT_SHELL_PIN_AND_SOCKET_CONNECTORS_CATALOG \(PDF, English\)](#)

Product Specifications:

- [GRACE INERTIA CONNECTOR 3.5 \(PDF, Japanese\)](#)

Application Specifications:

- None Available

Instruction Sheets:

- [Extraction Tool for GIC 3.5 Conn. \(PDF, Japanese\)](#)

CAD Files: (CAD Format & Compression Information)

- [2D Drawing \(DXF, Version 0\)](#)
- [3D Model \(IGES, Version 0\)](#)
- [3D Model \(STEP, Version 0\)](#)

[List all Documents](#)
Related Products:

- [Tooling](#)
- [Mating Products \(2\)](#)
- [Contacts \(4\)](#)

Product Features (Please use the Product Drawing for all design activity)

Product Type Features:

- Product Line = Universal Power
- Product Type = Connector
- Connector Type = Housing
- Wire/Cable Type = Discrete Wire
- Sealed = No

Mechanical Attachment:

- Mating Retention Type = Inertia Locking, Latching

Electrical Characteristics:

- Operating Voltage Reference = AC
- Operating Voltage (VAC) = 300

Termination Features:

- Termination Method to Wire/Cable = Crimp

Body Features:

- Mating Retention = With
- Wire Type = Stranded

Contact Features:

- Contact Type = Socket
- Contact Layout = In-Line

Housing Features:

- Connector Style = Plug
- Centerline (mm [in]) = 3.50 [0.138]
- Housing Material = Nylon 6/6 GF

Configuration Features:

- Number of Positions = 3

Industry Standards:

- [RoHS/ELV Compliance](#) = RoHS compliant, ELV compliant
- [Lead Free Solder Processes](#) = Not relevant for lead free process
- RoHS/ELV Compliance History = Always was RoHS compliant
- UL Flammability Rating = UL 94V-0

Identification Marking:

- Keying = D

Environmental:

- Operating Temperature (°C [°F]) = -30 - +105 [-22 - +221]

Conditions for Usage:

- Applies To = Wire/Cable
- Glow Wire Rating = Standard Part - Not Glow Wire
- For Use With = Cap Housing

Operation/Application:

- Application Use = Wire-to-Wire

Packaging Features:

- Packaging Method = Bag
- Packaging Quantity = 400

Other:

- Brand = TE Connectivity

- Housing Color = Yellow
- Mating Alignment = With
- Mating Alignment Type = Keyed

- Comment = Use with Grace Inertia Connector 3.5; Other options available upon request, consult our Product Information Center.

Corporate Information

[About TE](#)
[Investors](#)
[News Room](#)
[Supplier Portal](#)
[Careers](#)
[Terms & Conditions](#)
[Privacy Policy](#)
[AODA Accessibility Policy](#)
[AODA Multi-Year Accessibility Plan](#)

Quick Links

[Distributor Inventory](#)
[Product Cross Reference](#)
[Documents & Drawings](#)
[Product Compliance Support Center](#)
[Site Map](#)

Customer Support

[Email or Chat With Us](#)
[Find a Phone Number](#)
[Knowledge Base](#)
[Manage Your Account](#)

Keep Me Informed

