



HEADERS & RECEPTACLES



Active

PRODUCT DRAWING
English

3D PDF

TE CONNECTIVITY (TE)

1.25 WTB PLUG RA 30u" 6 POS

HPI | HPI

3-1734261-6

TE Internal Number: 3-1734261-6

Always EU RoHS/ELV Compliant

Centerline **1.25 mm [.049 in]**

Number of Positions **6**

PCB Mounting Orientation **Right Angle**

PCB Mounting Style **Surface Mount**

Number of Rows **1**

Product Drawings

[WIRE TO BOARD MALE HEADER, 1.25 MM PITCH, SMT, RIGHT ANGLE TYPE](#)

PDF (TIFF AVAILABLE)
English

[WIRE TO BOARD MALE HEADER, 1.25 MM PITCH, SMT, RIGHT ANGLE TYPE](#)

PDF (TIFF AVAILABLE)
English

CAD Files

[Customer View Model](#)

3D_IGS.ZIP
English

[Customer View Model](#)

3D_STP.ZIP
English

[Customer View Model](#)

2D_DXF.ZIP
English

[3D PDF](#)

PDF
English

Product Specifications

Product Specification

[Wire To Board Serial, DIP, Pitch 1.25](#)

PDF
English

Product Environmental Compliance

TE Material Declaration

[MD_3-1734261-6_05272014026_dmtec](#)

PDF
English

Please review product documents or [contact us](#) for the latest agency approval information. Please Note: Use the Product Drawing for all design activity.

Product Type Features	PCB Mounting Orientation	Right Angle
	Product Type	Connector
	Connector Type	Header
	Connector System	Wire-to-Board
	Wire/Cable Type	Discrete Wire
	Strain Relief	Without
	Connector Style	Plug
	Applies To	Printed Circuit Board
	Sealed	No
Configuration Features	Number of Positions	6
	Number of Rows	1
	Selectively Loaded	No
	Tail Orientation	Straight
	Backwall/Post Interruptions	Without
Electrical Characteristics	Operating Voltage (VAC)	100
Body Features	Header Type	Partially Shrouded
	Post Material	Phosphor Bronze
	Post Plating Material	Tin over Nickel
Contact Features	Contact Mating Area Plating Material	Nickel
	Contact Mating Area Plating Thickness (µin)	30
	Contact Plating Thickness	Gold: 30- Nickel: 50
	Contact Type	Pin
	Contact Plating Material	Gold over Nickel
	Contact Termination Area Plating Thickness	2.54 µm [100 µin]
	Contact Current Rating (A)	.8
	Contact Layout	Inline
	Contact Termination Area Plating Material	Tin
	Contact Termination Area Plating Material Finish	Matte
	Contact Base Material	Phosphor Bronze
Termination Features	Termination Method to PC Board	Surface Mount
	Contact Termination Type	Surface Mount

Mechanical Attachment	PCB Mounting Style	Surface Mount
	PCB Mount Alignment	Without
	Mating Retention	Without
	PCB Mount Retention	With
	PCB Mount Retention Type	Solder Pads
	Contact Retention	Without
	Mating Alignment Type	Polarization
	Mating Alignment	With
Housing Features	Centerline	1.25 mm [.049 in]
	Housing Color	Natural
	Housing Material	High Temperature Thermoplastic
Dimensions	Width	4.7 mm [.185 in]
	Length	12.79 mm [.503 in]
	Height	3.45 mm [.136 in]
	Wire/Cable Size (AWG)	28
Usage Conditions	Operating Temperature Range	-25 – 85 °C [-13 – 185 °F]
Operation/Application	For Use With	440146-x
	Pick and Place Cover	Without
Industry Standards	UL Flammability Rating	UL 94V-0
Packaging Features	Packaging Method	Reel
	Packaging Reel Diameter	24 mm
	Packaging Quantity	1000
Product Compliance	Statement of Compliance PDF VIEW ALL PRODUCT COMPLIANCE	

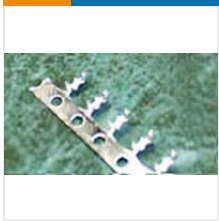
Relation Type ▼

RELATIONSHIP

Mating Products

Used to identify Mating Parts

[See All Mating Products](#)



PRODUCT - MATING PRODUCTS

Connectors - Wire-to-Board Connector
Contacts
MIS I MIS

**WTB Socket, Terminal
80u" Tin - 1734193-1**

TE INTERNAL NUMBER: 1734193-1

✓ Active

Always EU RoHS/ELV Compliant

Contact Type **Socket**

Centerline **1.25 mm**

Wire/Cable Size **32 – 28 AWG**

Packaging Method **Reel**



RELATIONSHIP

Mating Products

Used to identify Mating Parts

[See All Mating Products](#)



PRODUCT - MATING PRODUCTS

Connectors - Wire-to-Board Connector
Housings
MIS I MIS

**1.25mm WTB Socket,
Housing, 6p - 440146-6**

TE INTERNAL NUMBER: 440146-6

✓ Active

Always EU RoHS/ELV Compliant

Centerline **1.25 mm**

Number of Positions **6**

Number of Rows **1**

Color **Natural**

Mating Retention **Without**



RELATIONSHIP

Mating Products

Used to identify Mating Parts

[See All Mating Products](#)



PRODUCT - MATING PRODUCTS

Connectors - Wire-to-Board Connector
Contacts
MIS I MIS

**1.0 WTB Terminal 30u"
Au - 440147-2**

TE INTERNAL NUMBER: 440147-2

✓ Active

Always EU RoHS/ELV Compliant

Contact Type **Socket**

Centerline **1.25 mm**

Wire/Cable Size **32 – 28 AWG**

Contact Current Rating **1 A**

Packaging Method **Reel**

