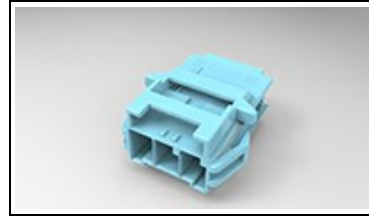


3-1971772-3 Product Details

[Share](#) [Print](#) [Email](#)



3-1971772-3

TE Internal Number: 3-1971772-3
Active

[View 3D PDF](#)

Power Triple Lock Connector System

Always EU RoHS/ELV Compliant (Statement of Compliance)

Product Highlights:

- Power Triple Lock Product Line
- Wire-to-Panel
- Applies To Panel
- Connector
- Connector Assembly

[View all Features](#)

Quick Links

- ▶ [Pricing & Availability](#)
- ▶ [Search for Tooling](#)
- ▶ [Product Feature Selector](#)
- ▶ [Contact Us About This Product](#)

[Add to My Part List](#) [Request Sample](#) [Find Similar Products](#) [Buy Product](#)

Documentation & Additional Information

Product Drawings:

- [CAP HOUSING,PANEL MOUNT,SINGLE ROW POWER TRIPLE LOCK \(PDF, English\)](#)

Catalog Pages/Data Sheets:

- None Available

Product Specifications:

- [Power Triple Lock Product Specification \(PDF, English\)](#)

Application Specifications:

- None Available

Instruction Sheets:

- None Available

CAD Files: (CAD Format & Compression Information)

- [2D Drawing \(DXF, Version B\)](#)
- [3D Model \(IGES, Version B\)](#)
- [3D Model \(STEP, Version B\)](#)

[List all Documents](#)

Related Products:

- [Tooling](#)

Product Features (Please use the Product Drawing for all design activity)

Product Type Features:

- Product Line = Power Triple Lock
- Product Type = Connector
- Connector Type = Connector Assembly

Mechanical Attachment:

- Panel Mount Retention = With
- Mount = Panel
- Mating Retention Type = Latching
- Panel Mount Retention Type = Mounting Ear(s)

Electrical Characteristics:

- Operating Voltage (VAC) = 600
- Operating Voltage (VDC) = 600

Dimensions:

- Panel Thickness (mm [in]) = 1.00 - 2.00 [0.039 - 0.079]

Body Features:

- Mating Retention = With

Contact Features:

- Contact Layout = In-Line

Housing Features:

- Connector Style = Receptacle
- Centerline (mm [in]) = 6.00 [0.236]
- Housing Material = PBT - GF
- Housing Color = Blue

Configuration Features:

- Number of Positions = 3

Industry Standards:

- [RoHS/ELV Compliance](#) = RoHS compliant, ELV compliant
- [RoHS/ELV Compliance History](#) = Always was RoHS compliant
- [UL Flammability Rating](#) = UL 94V-0

Identification Marking:

- Keying = C

Environmental:

- Operating Temperature (°C [°F]) = -55 - +105 [-67 - +221]
- Halogen Free = No

Conditions for Usage:

- Applies To = Panel
- Glow Wire Rating = Standard Part - Not Glow Wire

Operation/Application:

- Application Use = Wire-to-Panel
- Contact Transmits (Typical Application) = Power

Other:

- Brand = TE Connectivity

Corporate Information

[About TE](#)
[Investors](#)
[News Room](#)
[Supplier Portal](#)
[Careers](#)
[Terms & Conditions](#)
[Privacy Policy](#)
[AODA Accessibility Policy](#)
[AODA Multi-Year Accessibility Plan](#)

Quick Links

[Distributor Inventory](#)
[Product Cross Reference](#)
[Documents & Drawings](#)
[Product Compliance Support Center](#)
[Site Map](#)

Customer Support

[Email or Chat With Us](#)
[Find a Phone Number](#)
[Knowledge Base](#)
[Manage Your Account](#)

Keep Me Informed

