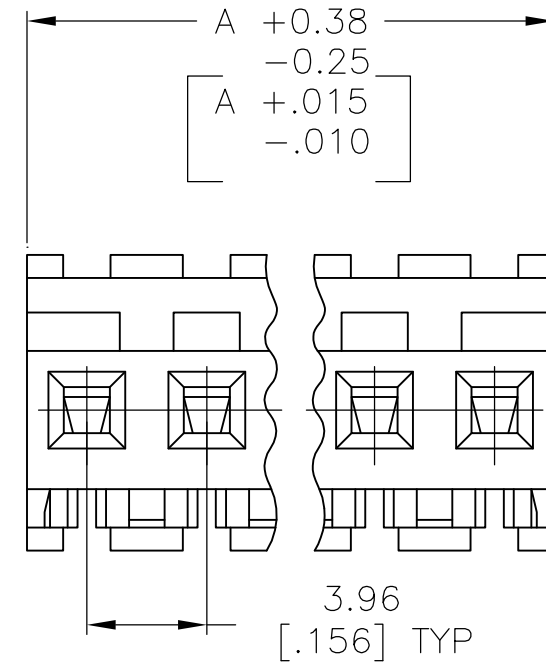
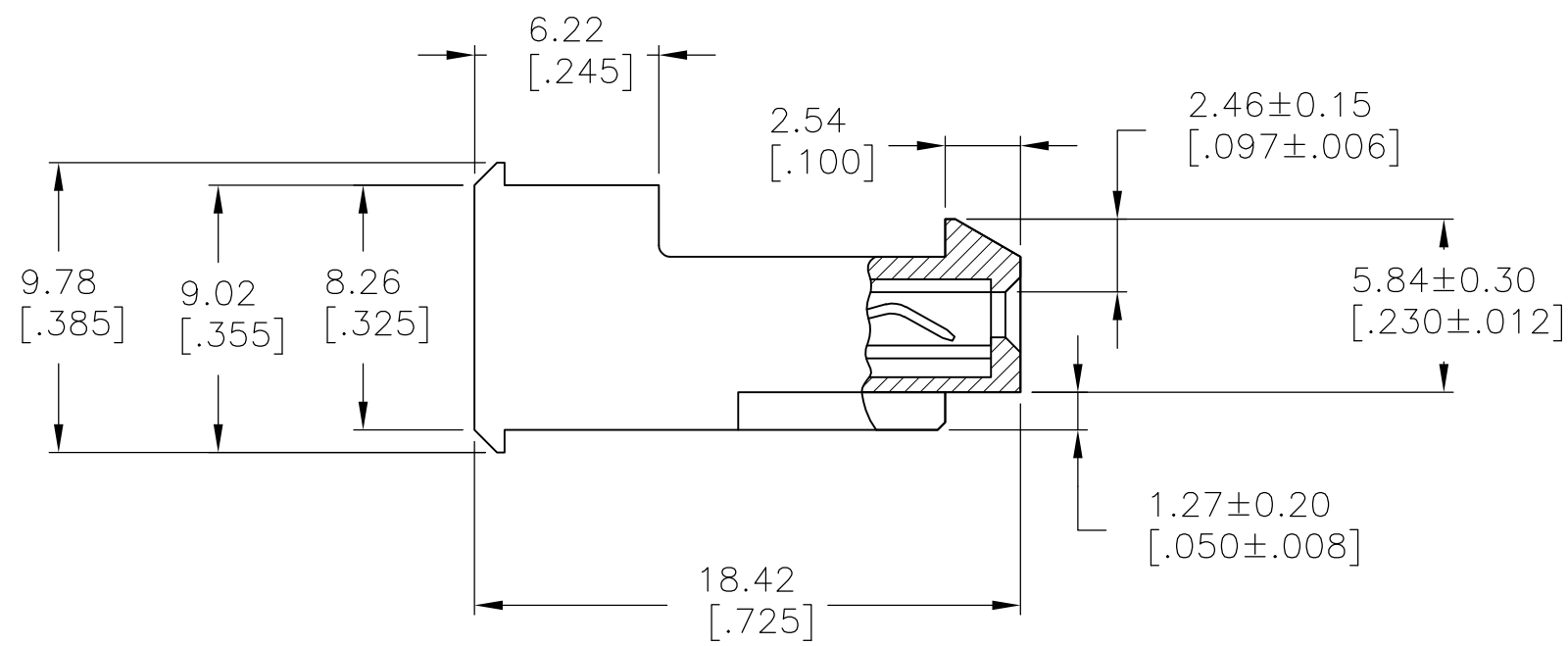
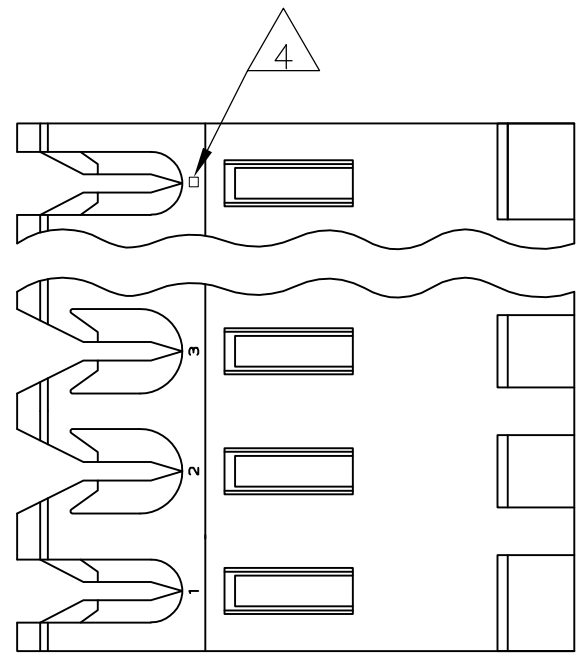


THIS DRAWING IS UNPUBLISHED. RELEASED FOR PUBLICATION
 © COPYRIGHT - By - ALL RIGHTS RESERVED.

LOC	DIST	REVISIONS			
P	LTR	DESCRIPTION	DATE	DWN	APVD
CM	54	T2	REVISED PER ECO-11-004820	11MAR11	RK HMR

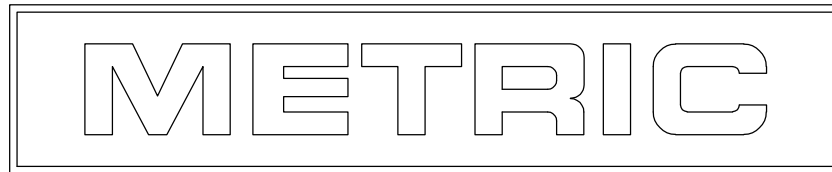


DIM A	NO OF CIRCUITS	PART NO
95.10	[3.744]	24 5-640600-4
91.14	[3.588]	23 5-640600-3
87.17	[3.432]	22 5-640600-2
83.21	[3.276]	21 5-640600-1
79.25	[3.120]	20 5-640600-0
75.29	[2.964]	19 4-640600-9
71.32	[2.808]	18 4-640600-8
67.36	[2.652]	17 4-640600-7
63.40	[2.496]	16 4-640600-6
59.44	[2.340]	15 4-640600-5
55.47	[2.184]	14 4-640600-4
51.51	[2.028]	13 4-640600-3
47.55	[1.872]	12 4-640600-2
43.59	[1.716]	11 4-640600-1
39.62	[1.560]	10 4-640600-0
35.66	[1.404]	9 3-640600-9
31.70	[1.248]	8 3-640600-8
27.74	[1.092]	7 3-640600-7
23.77	[.936]	6 3-640600-6
19.81	[.780]	5 3-640600-5
15.85	[.624]	4 3-640600-4
11.89	[.468]	3 3-640600-3
7.92	[.312]	2 3-640600-2
95.10	[3.744]	24 2-640600-4
91.14	[3.588]	23 2-640600-3
87.17	[3.432]	22 2-640600-2
83.21	[3.276]	21 2-640600-1
79.25	[3.120]	20 2-640600-0
75.29	[2.964]	19 1-640600-9
71.32	[2.808]	18 1-640600-8
67.36	[2.652]	17 1-640600-7
63.40	[2.496]	16 1-640600-6
59.44	[2.340]	15 1-640600-5
55.47	[2.184]	14 1-640600-4
51.51	[2.028]	13 1-640600-3
47.55	[1.872]	12 1-640600-2
43.59	[1.716]	11 1-640600-1
39.62	[1.560]	10 1-640600-0
35.66	[1.404]	9 640600-9
31.70	[1.248]	8 640600-8
27.74	[1.092]	7 640600-7
23.77	[.936]	6 640600-6
19.81	[.780]	5 640600-5
15.85	[.624]	4 640600-4
11.89	[.468]	3 640600-3
7.92	[.312]	2 640600-2

1 MATERIAL: CONNECTOR - NYLON UL94V-2 (YELLOW).
 CONTACTS - 0.30[.012] THICK COPPER ALLOY
 (BRIGHT TIN-LEAD 0.00203[.000080] MIN. THICK FOR CONTACTS 640600-2 THRU 2-640600-4)
 (MATTE WHISKER MITIGATED TIN 0.00203[.000080] MIN THICKNESS OVER NICKEL UNDERPLATE FOR 3-640600-2 THRU 5-640600-4).

- 2. CONTACTS ACCEPT 20 AWG WIRE WITH 2.41[.095] MAX INSULATION DIAMETER.
- 3. CONTACTS MUST ACCEPT 1.14±0.03[.045±.001] SQUARE POST AND REMAIN LOCKED IN POSITION.
- 4 IDENTIFICATION NUMBER FOR LAST CIRCUIT MAY NOT APPEAR ON ALL ASSEMBLIES.
- 5. DIMENSIONS IN BRACKETS ARE IN INCHES.
- 6. HOUSING FEATURES ARE: FEED-THRU WITH LOCKING RAMP.
- 7 OBSOLETE PARTS: OBSOLETE CIS STREAMLINING PER D.RENAUD/D.SINISI

SUPERSEDED
 SUPERSEDED
 SUPERSEDED



THIS DRAWING IS A CONTROLLED DOCUMENT.		DWN B. LEWIS 12FEB91	TE Connectivity	
DIMENSIONS: mm [INCHES]		CHK R. SWING 12FEB91	NAME	
TOLERANCES UNLESS OTHERWISE SPECIFIED:		APVD D. CLARK 19FEB91	MTA-156 CONNECTOR ASSEMBLY, 20 AWG, STANDARD	
0 PLC ± - 1 PLC ± - 2 PLC ± - 3 PLC ± 0.13 [.005] 4 PLC ± -		PRODUCT SPEC 108-1051	SIZE A2	CAGE CODE 00779
MATERIAL 1		FINISH 1	DRAWING NO 114-1020	RESTRICTED TO -
CUSTOMER DRAWING		WEIGHT -	SCALE 4:1	SHEET 1 OF 1
			DRAWING NO C=640600	REV T2