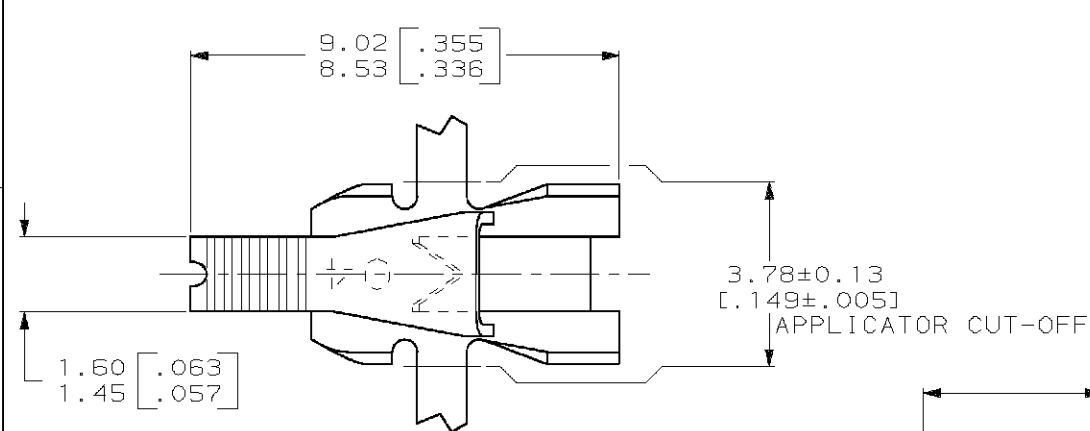


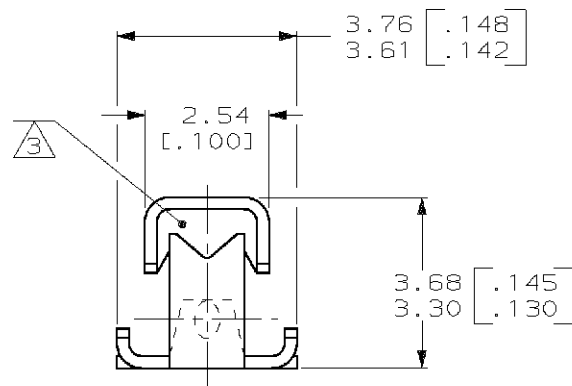
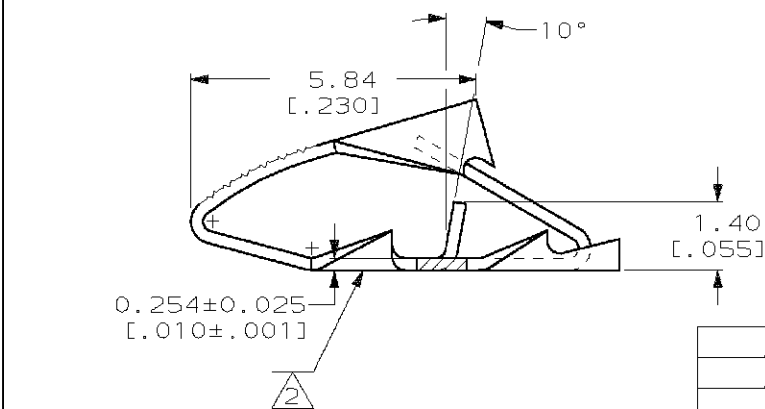
4
DRAWING MADE IN THIRD ANGLE PROJECTION

3
THIS DRAWING IS UNPUBLISHED. RELEASED FOR PUBLICATION .19
© COPYRIGHT 19 BY AMP INCORPORATED. ALL INTERNATIONAL RIGHTS RESERVED.

LOC	DIST	P	F	REVISIONS				DATE	APPD
				ZONE	LTR	DESCRIPTION			
AF	50				R	ADDED -3 PER 0G3A-0052-99		20JUL99	JR/KR



- 1 CONTINUOUS STRIP ON REELS WITH TERMINALS LOCATED ON 6.10±0.08 [.240±.003] CENTERS.
- 2 IDENTIFICATION NUMBER (04) FOR MAGNET WIRE RANGE.
- 3 SOLID OR FUSED STRANDED LEAD WIRE 0.3-0.9mm² [#22-#18] AWG.
- 4 0.001016 [.000040] MIN TIN.
- 5 0.002032 [.000080] MIN TIN.



4	SPLICE FREE	STANDARD REELS	0.02-0.06mm [#52-#42] AWG	62781-3
4	SPLICE FREE	PLASTIC REELS	0.02-0.06mm [#52-#42] AWG	62781-2
5	WITH SPLICE	STANDARD REELS	0.02-0.06mm [#52-#42] AWG	62781-1
FINISH	SPLICE	REELING	COPPER MAGNET WIRE RANGE	PART NUMBER

A
METRIC

DO NOT SCALE PRINT. UNLESS SPECIFIED DIMENSIONS IN mm (INCHES) TOLERANCES ON: 2 PLC DEC ± - 3 PLC DEC ± 0.25 (.010) ANGLES ± -		DR 9/27/89 MICHAEL S. FEHER	AMP AMP INCORPORATED Harrisburg, Pa. 17105	
MATERIAL H02 HARD BRASS		CHK 10/12/89 JEFF R. RUTH		
FINISH SEE TABLE		APPD 10/12/89 NELSON E. NEFF	NAME TERMINAL, POKE-IN, MINI MAG-MATE™	
		APPD 10/12/89 TERRY L. SHUTTER	SIZE B	CAGE CODE 00779
		PRODUCT SPEC 108-2016	DRAWING NO 62781	
		APPLICATION SPEC 114-2047	SCALE 10:1	SHEET 1 OF 1
		WEIGHT -		