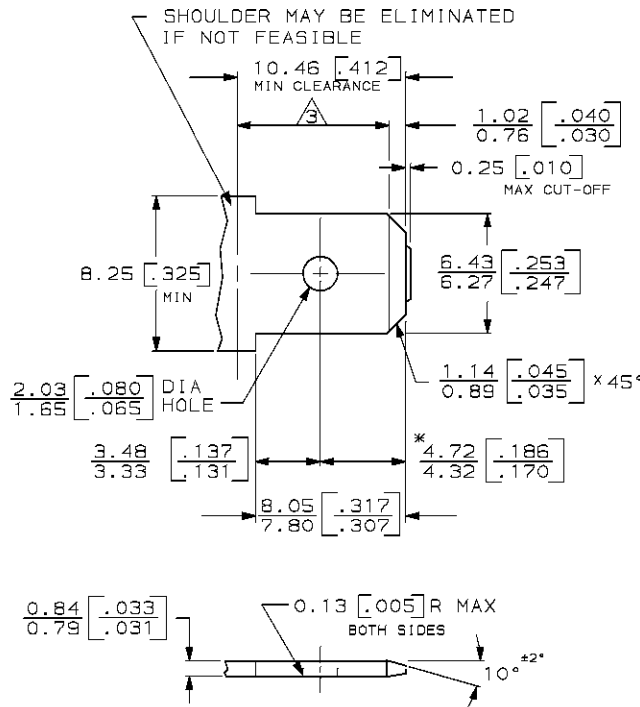
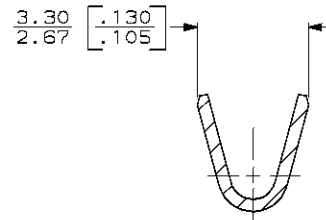
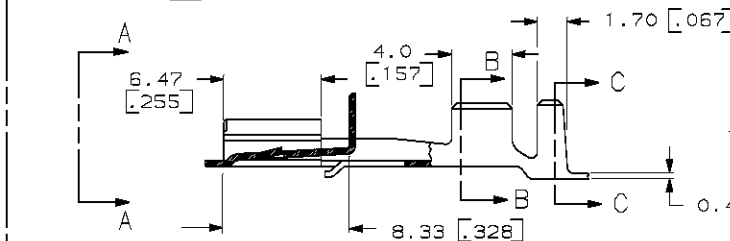
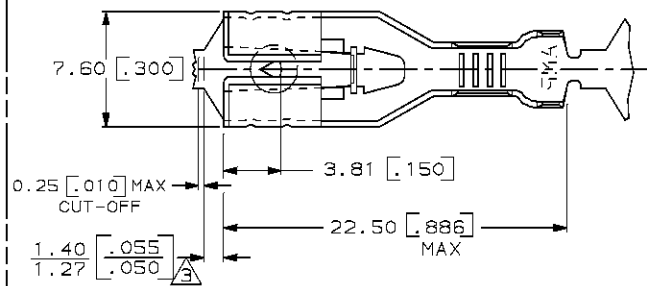


LOC		DIST		P		F		REVISIONS		
AF	50					ZONE	LTR	DESCRIPTION	DATE	APPROVED
							J	REV PER OG1A-0252-98	8/24/88	JR/JG

SUGGESTED MATING TAB

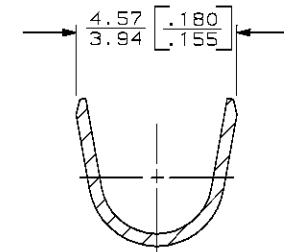
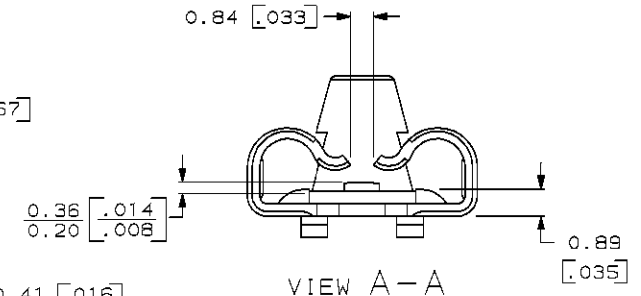


- 1 - MATL: 1/2H BRASS OR NICKEL PL STEEL.
 - 2 - NO BURRS PERMISSIBLE AT HOLE.
 - 3 - MUST BE FLAT WITHIN 0.076 [.003] OVER THIS LENGTH.
 - 4 - TIN PLATING IS REQUIRED ON BRASS WHEN TERMINAL TEMP. IS OVER 225°F.
 - 5 - HOLE MUST BE SYMMETRICAL ABOUT TAB Q WITHIN 0.076 [.003]
- * TO BE USED ONLY WHEN SHOULDER IS ELIMINATED.



SECTION B-B

- 1 DIMENSIONS IN BRACKETS ARE IN INCHES.
 - 2 CONTINUOUS STRIP ON REELS.
- 3 THE 1.40 [.055] / 1.27 [.050] DIMENSION MUST BE MAINTAINED BY THE APPLICATOR CUT-OFF TO ENSURE THE PROPER LOCKING FUNCTION OF THE RECEPTACLE.



SECTION C-C

1.52-2.54 [.060-.100]	0.3-0.8 mm ² [22-18]	63119-1
INSULATION RANGE	WIRE SIZE	PART NO

UNLESS OTHERWISE SPECIFIED DIMENSIONS ARE IN MM TOLERANCES ON:	DR 7/28/86	AMP INCORPORATED Harrisburg, Pa. 17105
	JR RUTH	
2 PL DEC ±	CHK 1/15/87	NAME RECT, POSITIVE LOCK, .250 SERIES
3 PL DEC ± 0.25 [.010]	G YETTER	
ANGLES ±	APPD 1/15/87	SIZE C
	J GILLESPIE	
MATERIAL	APPD 1/15/87	FSCM NO 00779
#4H BRASS	R KUZO	DRAWING NO 63119
FINISH	PRODUCT SPEC	SCALE NTS
TIN	APPLICATION SPEC 114-2074	SHEET 1 OF 1
WEIGHT		

METRIC