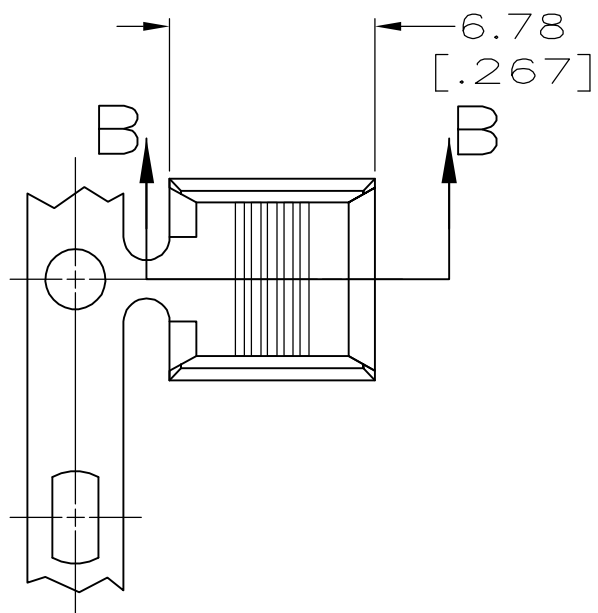
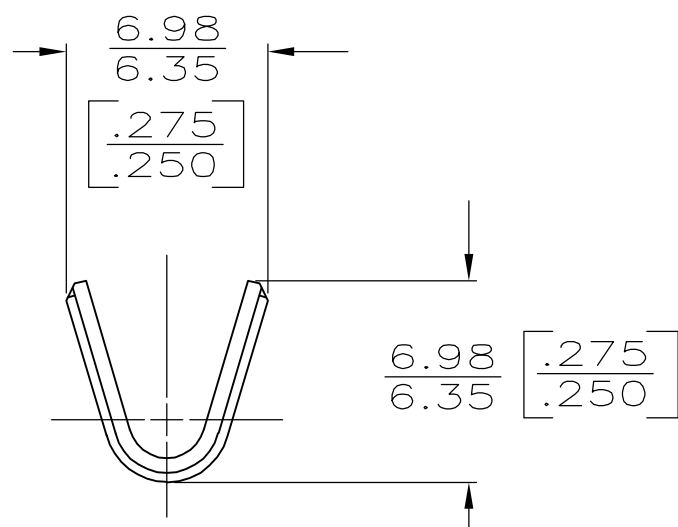


THIS DRAWING IS UNPUBLISHED. RELEASED FOR PUBLICATION
 © COPYRIGHT BY TYCO ELECTRONICS CORPORATION. ALL RIGHTS RESERVED.

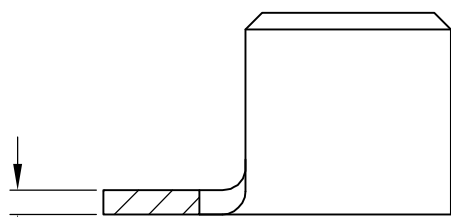
LOC	DIST	REVISIONS					
AF	50	P	LTR	DESCRIPTION	DATE	DWN	APVD
			C1	ECR-06-023927(REDRAWN IN AUTOCAD)	14NOV06	HMR	GP



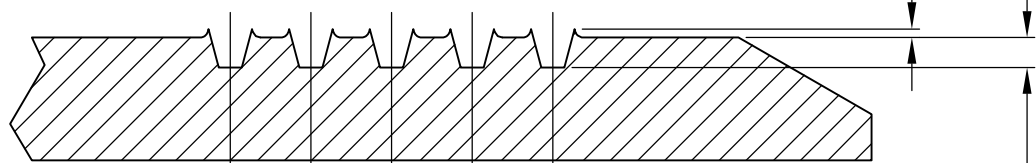
1 CONTINUOUS STRIP ON REEL.
 2 CRIMP WIDTH: .180 F TYPE (AMPLIVAR THRU)
 CRIMP HEIGHT (± 0.002) = (TOTAL CMA + 28,700) / 317,400
 GENERAL APPLICATION GUIDELINES MUST BE FOLLOWED AS SPECIFIED IN CATALOG #82221
 FOR APPLICATION INFORMATION CALL: 1-800-722-1111
 FOR PRODUCT INFORMATION CALL: 1-800-522-6752



0.80 \pm 0.025
 [.032 \pm .001]



0.08 MAX
 [.003]



SECTION B-B
 SCALE 20:1

2	10,000-16,000 CMA	63561-1
WIRE RANGE		PART NUMBER

THIS DRAWING IS A CONTROLLED DOCUMENT.		DWN 05JUN2002 MICHAEL S. FEHER	Tyco Electronics Corporation Harrisburg, PA 17105-3608				
DIMENSIONS: mm [INCHES]		CHK 05JUN2002 GARY D. PORTA					
TOLERANCES UNLESS OTHERWISE SPECIFIED:		APVD 05JUN2002 GARY D. PORTA	NAME				
0 PLC $\pm -$ 1 PLC $\pm -$ 2 PLC ± 0.25 [.010] 3 PLC $\pm -$ 4 PLC $\pm -$ ANGLES $\pm -$		PRODUCT SPEC	SPLICE, AMPLIVAR™, 5 SERRATIONS				
MATERIAL		APPLICATION SPEC	SIZE	CAGE CODE	DRAWING NO	RESTRICTED TO	
H02 BRASS		FINISH	A3	00779	C-63561	-	
0.002032[.000080] MIN TIN PLATE		WEIGHT	CUSTOMER DRAWING		SCALE 4:1	SHEET 1 OF 1	REV C1