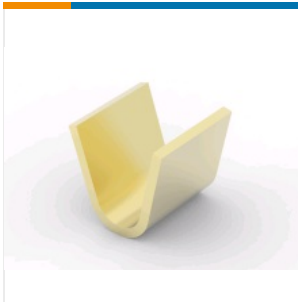




SPLICES



TE CONNECTIVITY (TE)

SPLICE 5000-16000 .025 BR

Splices | Open Barrel Rings & Spades

63625-1

TE Internal Number: 63625-1

Always EU RoHS/ELV Compliant

Product Type **Splice**

Sealed **No**

Wire Size (CMA) **5000 – 16000**

Splice Material **Brass**

Splice Type **Thru Splice**

Active

PRODUCT DRAWING
English

3D PDF

Product Drawings

[SPLICE](#)

PDF
English

CAD Files

[Customer View Model](#)

3D_STP.ZIP
English

[3D PDF](#)

PDF
3D

[Customer View Model](#)

2D_DXF.ZIP
English

[Customer View Model](#)

3D_IGS.ZIP
English

Product Specifications

Application Specification

[Open Barrel Pigtail And Through Splices](#)

PDF
English

Product Environmental Compliance

TE Material Declaration

[MD_63625-1_02122016851_dmtec](#)

PDF
English

Please review product documents or [contact us](#) for the latest agency approval information. Please Note: Use the Product Drawing for all design activity.

Product Type Features

Product Type

Splice

Sealed

No

Splice Type	Thru Splice
Serrated	No
Barrel Type	Open Barrel
Wire/Cable Type	Regular Wire
Insulated Wire Support	No

Configuration Features	Strip Orientation	Side Feed
------------------------	-------------------	------------------

Body Features	Splice Material	Brass
	Weight per Piece (g)	.739
	Plating Material	Unplated

Dimensions	Wire Size (CMA)	5000 – 16000
	Material Thickness	.64 mm [.025 in]





Packaging Features	Packaging Method	Strip
	Packaging Quantity	3500

Product Compliance

[Statement of Compliance PDF](#)

[VIEW ALL PRODUCT COMPLIANCE](#)

CUSTOMERS ALSO BOUGHT

<p>AUTOMOTIVE, TRUCK, BUS, & OFF-ROAD HOUSINGS</p>  <p>5POS, MCON 1.2 - LL CONNECTOR, SEALED 1-1670921-1</p> <p>Save to List Find Similar Products</p>	<p>CRIMP QUICK DISCONNECTS</p>  <p>BLADE REC 250 18-14AWG TPBR 640417-2</p> <p>Save to List Find Similar Products</p>	<p>OCEAN APPLICATORS</p>  <p>PLATE, FRONT SHEAR 240642-1</p> <p>Save to List Find Similar Products</p>	<p>PRINTER RIBBONS</p>  <p>1330-0600-10 1330-0600-10</p> <p>Save to List Find Similar Products</p>
---	--	---	---