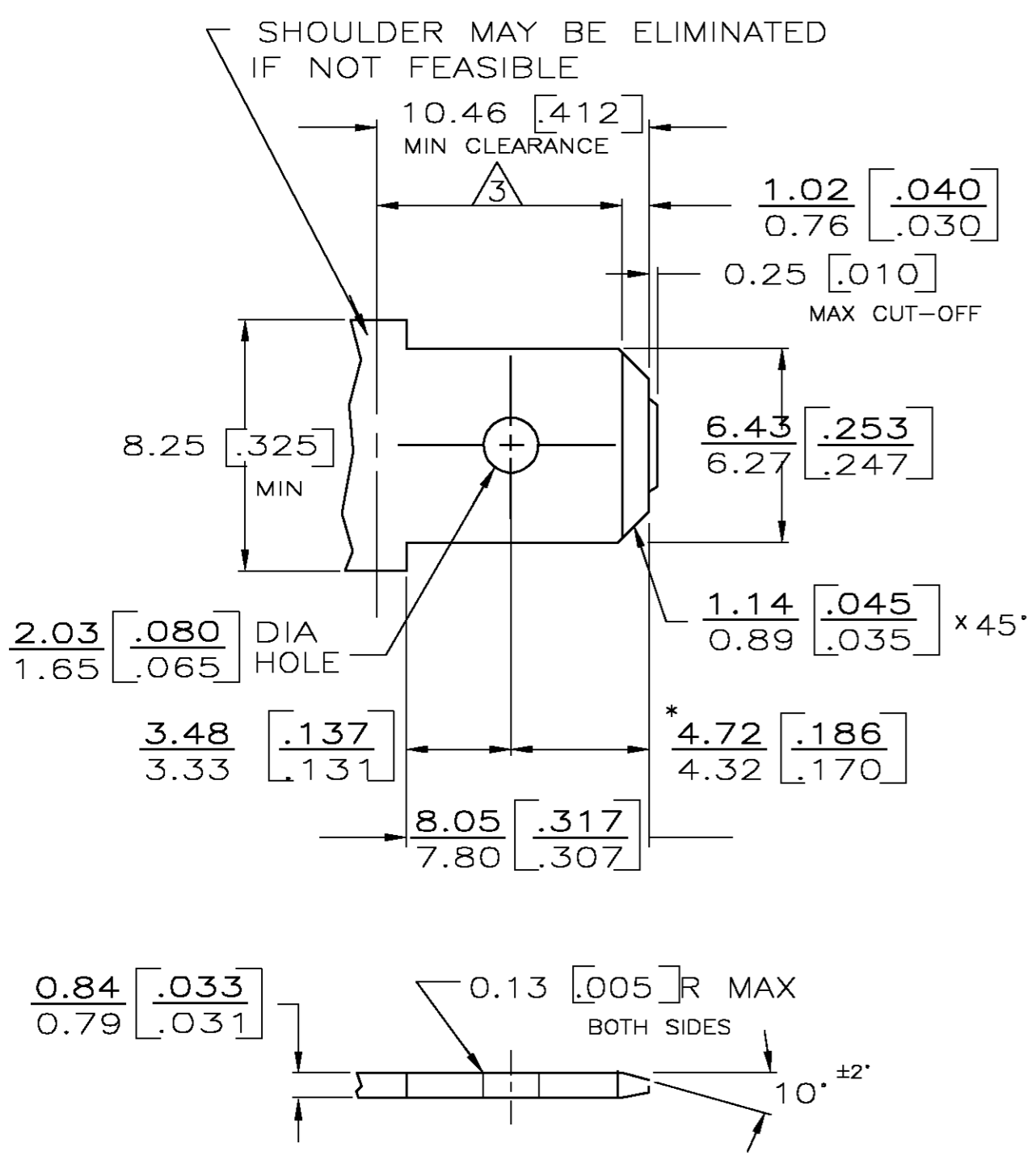


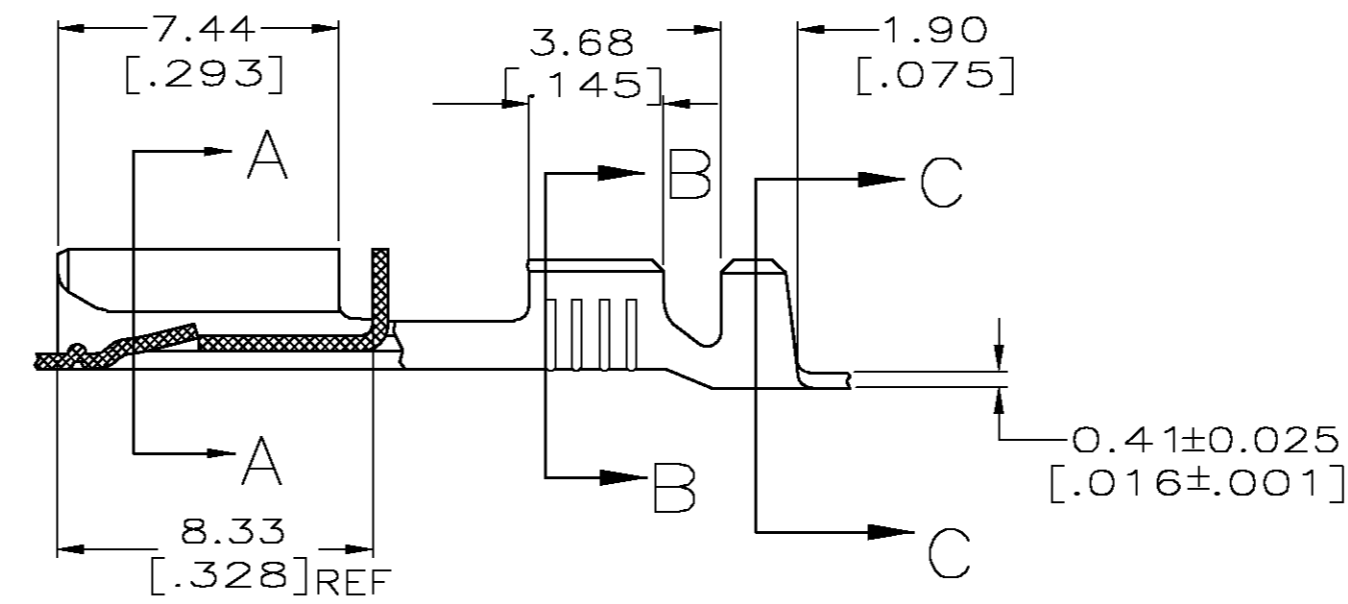
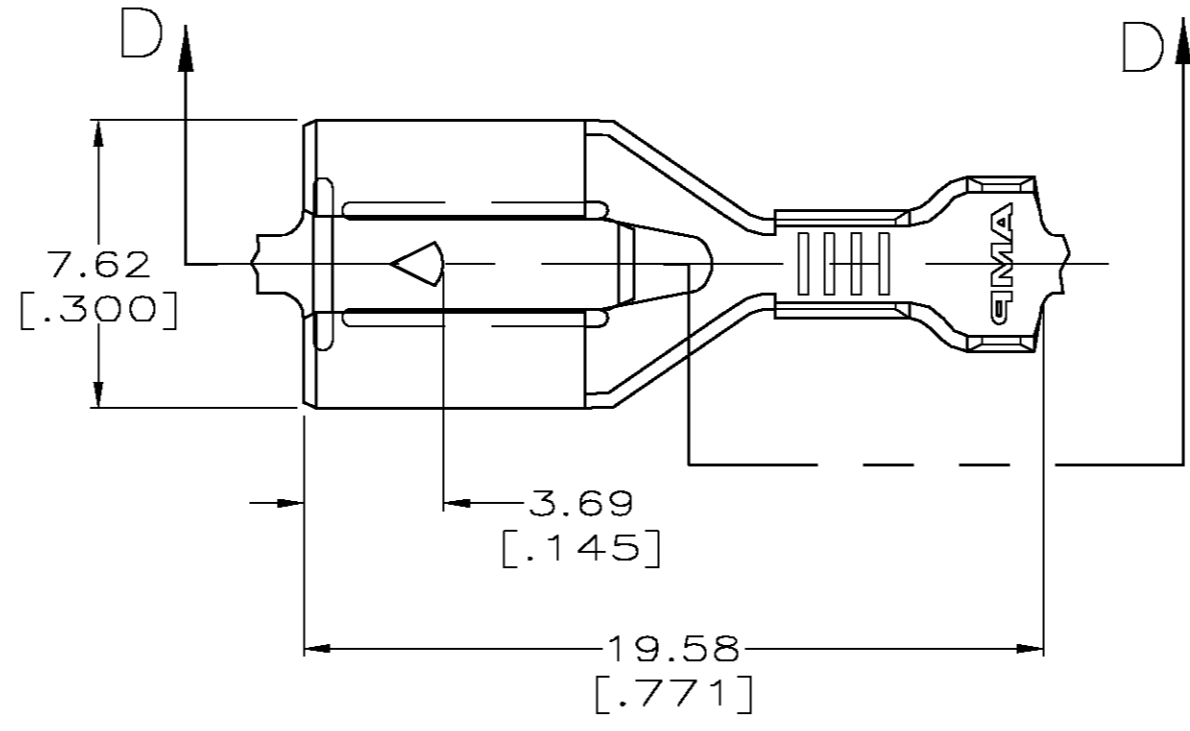
THIS DRAWING IS UNPUBLISHED. RELEASED FOR PUBLICATION
 © COPYRIGHT BY TYCO ELECTRONICS CORPORATION. ALL RIGHTS RESERVED.

LOC		DIST		REVISIONS			
P	LTR	DESCRIPTION	DATE	DWN	APVD		
AF	50	F	REV PER 0G3A-0236-04	05APR04	JR	GP	

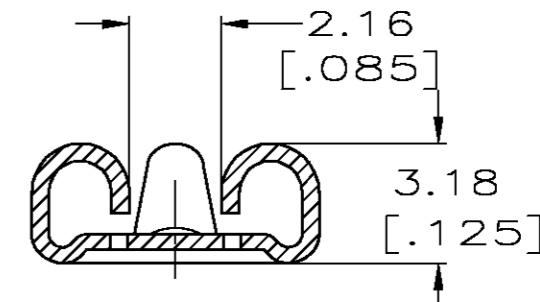
SUGGESTED MATING TAB



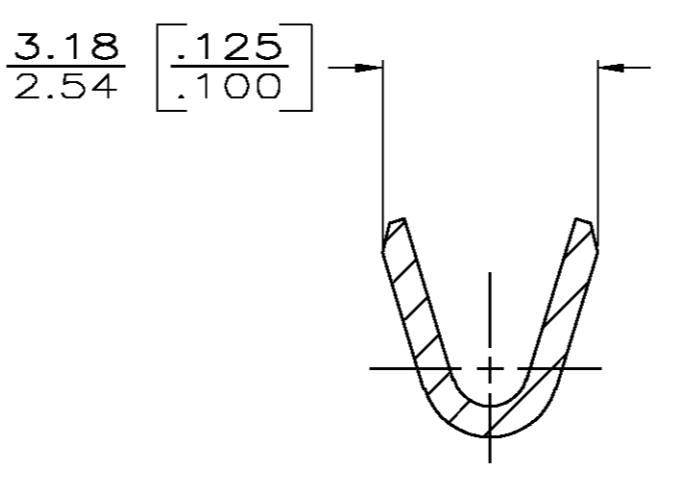
- 1 - MATL: 1/2H BRASS OR NICKEL PL STEEL.
 - 2 - NO BURRS PERMISSIBLE AT HOLE.
 - 3 - MUST BE FLAT WITHIN 0.076 [.003] OVER THIS LENGTH.
 - 4 - TIN PLATING IS REQUIRED ON BRASS WHEN TERMINAL TEMP. IS OVER 225°F, 105°C
 - 5 - HOLE MUST BE SYMMETRICAL ABOUT TAB Q̄ WITHIN 0.076 [.003]
- * TO BE USED ONLY WHEN SHOULDER IS ELIMINATED.



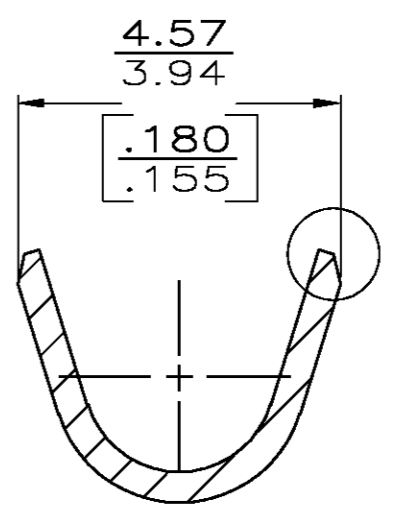
SECTION D-D



SECTION A-A



SECTION B-B



SECTION C-C

1 CONTINUOUS STRIP ON REELS.

TIN 0.002032 [.000080] MIN	1.52-2.54 [.060-.100] DIA	[#22-#18] AWG	63933-2
-	1.52-2.54 [.060-.100] DIA	[#22-#18] AWG	63933-1
FINISH	INSULATION RANGE	WIRE SIZE	PART NO.

THIS DRAWING IS A CONTROLLED DOCUMENT.		DWN	JR RUTH	9/4/96	 Tyco Electronics Corporation Harrisburg, PA 17105	
DIMENSIONS: INCHES		CHK	MS FEHER	9/4/96		
TOLERANCES UNLESS OTHERWISE SPECIFIED:		APVD	J GILLISPIE	9/4/96		
0 PLC ± - 1 PLC ± - 2 PLC ± 0.25 [.010] 3 PLC ± - 4 PLC ± - ANGLES ± - FINISH SEE TABLE		PRODUCT SPEC	RECEPTACLE, POSITIVE LOCK, 6.35 [.250] SERIES			
MATERIAL	H06 BRASS	APPLICATION SPEC	114-2061		SIZE	A2
CUSTOMER DRAWING		WEIGHT	-		CAGE CODE	00779
SCALE		5:1		SHEET	1 OF 1	
REV		F				