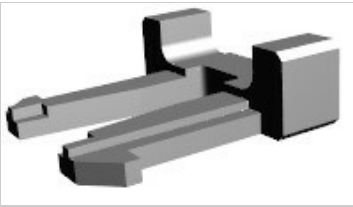




917698-1 Product Details

Share | Print | Email



2.5mm Signal Double Lock Connector

2.5 SIGNAL DBL LOCK D.L.P 2P

917698-1

TE Internal Number: 917698-1

Active

View 3D PDF

Product Highlights [View All](#)

- Accessory
- Accessory Type = Double Lock Plate
- 2 Positions
- Nylon 6/6 GF Housing Material
- Housing Color = Natural

[Pricing & Availability](#)

[Request Sample](#)

[Add to My Part List](#)

[Buy Product through Distributor](#)

Documents | Features | Compliance

Product Drawings	
2.5mm SIGNAL DBL-LOCK 2P DBL LOCK PLATE (PDF, Japanese)	.tif available
CAD Files	
2D Drawing (DXF, Version B1, ZIP)	
3D Model (IGES, Version B1, ZIP)	
3D Model (STEP, Version B1, ZIP)	
Catalog Pages/Data Sheets	
SOFT_SHELL_PIN_AND_SOCKET_CONNECTORS_CATALOG (PDF, English)	
Product Specifications	
Product Specification	
2.5 Signal DBL Lock Connector (PDF, English)	
GRACE INERTIA CONNECTOR 2.5 W (WIRE TO WIRE TYPE CON... (PDF, English)	
Qualification Test Report	
GRACE INERTIA CONNECTOR 2.5W (PDF, Japanese)	
Product Environmental Compliance	
TE Material Declaration	
MD_917698-1_06192014227_dmtec (PDF, English)	

Related Products

Not quite the product you're looking for?

[Find Similar Products](#)

[View Part in Product Feature Selector](#)

[Check for Tooling](#)

[Feedback](#)

Corporate Information

- [About TE](#)
- [Investors](#)
- [News Room](#)
- [Supplier Portal](#)
- [Careers](#)
- [Terms & Conditions](#)

Quick Links

- [Distributor Inventory](#)
- [Product Cross Reference](#)
- [Documents & Drawings](#)
- [Product Compliance Support Center](#)
- [Site Map](#)

Customer Support

- [Email or Chat With Us](#)
- [Find a Phone Number](#)
- [Knowledge Base](#)
- [Manage Your Account](#)

Keep Me Informed



