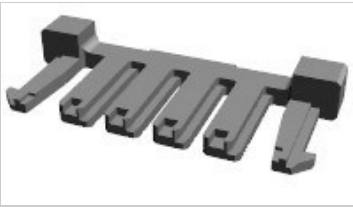




# 917702-1 Product Details

[Share](#) [Print](#) [Email](#)



## 2.5mm Signal Double Lock Connector

2.5 SIGNAL D//LOCK D.L.P 6P

**917702-1**

TE Internal Number: 917702-1

**Active**

[View 3D PDF](#)

### Product Highlights [View All](#)

- Accessory
- Accessory Type = Double Lock Plate
- 6 Positions
- Nylon 6/6 GF Housing Material
- Housing Color = Natural

[Pricing & Availability](#)

[Request Sample](#)

[Add to My Part List](#)

[Buy Product through Distributor](#)

[Documents](#) [Features](#) [Compliance](#)

Product Drawings	
<a href="#">2.5mm SIGNAL DBL-LOCK 6P DBL LOCK PLATE</a> (PDF, English)	<a href="#">.tif available</a>
CAD Files	
<a href="#">2D Drawing</a> (DXF, Version B, ZIP)	
<a href="#">3D Model</a> (IGES, Version B, ZIP)	
<a href="#">3D Model</a> (STEP, Version B, ZIP)	
Catalog Pages/Data Sheets	
<a href="#">SOFT_SHELL_PIN_AND_SOCKET_CONNECTORS_CATALOG</a> (PDF, English)	
Product Specifications	
<a href="#">Product Specification</a>	
<a href="#">2.5 Signal DBL Lock Connector</a> (PDF, English)	
<a href="#">Qualification Test Report</a>	
<a href="#">GRACE INERTIA CONNECTOR 2.5W</a> (PDF, Japanese)	

**Related Products**

Not quite the product you're looking for?

[Find Similar Products](#)

[View Part in Product Feature Selector](#)

[Check for Tooling](#)

[Feedback](#)

### Corporate Information

- [About TE](#)
- [Investors](#)
- [News Room](#)
- [Supplier Portal](#)
- [Careers](#)
- [Terms & Conditions](#)
- [Privacy Policy](#)
- [Global Accessibility Statement](#)

### Quick Links

- [Distributor Inventory](#)
- [Product Cross Reference](#)
- [Documents & Drawings](#)
- [Product Compliance Support Center](#)
- [Site Map](#)

### Customer Support

- [Email or Chat With Us](#)
- [Find a Phone Number](#)
- [Knowledge Base](#)
- [Manage Your Account](#)

### Keep Me Informed



