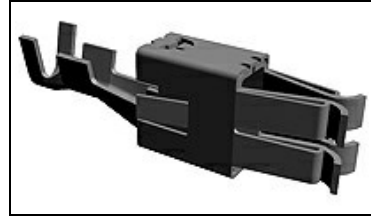


962930-1 Product Details



962930-1

TE Internal Number: 962930-1

Active

View 3D PDF

Timer Contacts

Always EU RoHS/ELV Compliant (Statement of Compliance)

Product Highlights:

- Timer Products Product Line
- Maxi-Power-Timer Series
- Wire-to-Wire
- Applies To Wire/Cable
- Contact

[View all Features](#)

Quick Links

- ▶ [Pricing & Availability](#)
- ▶ [Search for Tooling](#)
- ▶ [Product Feature Selector](#)
- ▶ [Contact Us About This Product](#)

[Add to My Part List](#) | [Request Sample](#) | [Find Similar Products](#) | [Buy Product](#)

Documentation & Additional Information

Product Drawings:

- [MAXI POWER TIMER FOR 1,2MM TABS \(PDF, English\)](#)
- [MAXI-POWER-TIMER KONTAKT \(PDF, German\)](#)

Catalog Pages/Data Sheets:

- None Available

Product Specifications:

- None Available

Application Specifications:

- [Allgemeine Crimpspezifikation / GENERAL CRIMP SPEC. \(PDF, German\)](#)

Instruction Sheets:

- None Available

CAD Files: (CAD Format & Compression Information)

- [2D Drawing \(DXF, Version H\)](#)
- [3D Model \(IGES, Version H\)](#)
- [3D Model \(STEP, Version H\)](#)

Additional Information:

- [Product Line Information](#)

Related Products:

- [Tooling](#)

[List all Documents](#)

Feedback

Product Features (Please use the Product Drawing for all design activity)

Product Type Features:

- Product Line = Timer Products
- Product Type = Contact
- Cable Type = FLK (Vehicle Cable Plastic)
- Wire/Cable Type = Discrete Wire
- Insulation Support = With

Electrical Characteristics:

- Contact - Rated Current (A) = 78

Termination Features:

- Wire/Cable Size (AWG) = 10 - 11
- Wire/Cable Size (mm²) = 4 - 6
- Termination Method to Wire/Cable = Crimp

Dimensions:

- Mating Area Interface Dimensions (mm [in]) = 9.50 x 1.20 [.374 x .047]

Contact Features:

- Contact Type = Socket
- Contact Design = Spring Box Cage
- Contact Base Material = CuNiSi
- Contact Plating, Mating Area, Material = Pre-Tin

Configuration Features:

- GET 0.64 Connector System = No
- Single Wire Sealing System = No

Industry Standards:

- [RoHS/ELV Compliance](#) = RoHS compliant, ELV compliant
- [Lead Free Solder Processes](#) = Not relevant for lead free process
- RoHS/ELV Compliance History = Always was RoHS compliant
- Agency/Standard = IEC 664/664A (DIN VDE 0110)

Environmental:

- Operating Temperature (°C [°F]) = -40 - +130 [-40 - +266]

Conditions for Usage:

- Applies To = Wire/Cable
- Accepts Wire Insulation Diameter, Range (mm [in]) = 4.00 - 5.20 [0.157 - 0.204]

Operation/Application:

- Application Use = Wire-to-Wire
- Contact Transmits (Typical Application) = Power

Packaging Features:

- Packaging Method = Reel
- Packaging Quantity = 600

Other:

- Series = Maxi-Power-Timer
- Brand = AMP
- Comment = Refer to the application and product specification for additional information.

Corporate Information

[About TE](#)
[Investors](#)
[News Room](#)
[Supplier Portal](#)
[Careers](#)
[Terms & Conditions](#)
[Privacy Policy](#)
[AODA Accessibility Policy](#)
[AODA Multi-Year Accessibility Plan](#)

Quick Links

[Distributor Inventory](#)
[Product Cross Reference](#)
[Documents & Drawings](#)
[Product Compliance Support Center](#)
[Site Map](#)

Customer Support

[Email or Chat With Us](#)
[Find a Phone Number](#)
[Knowledge Base](#)
[Manage Your Account](#)

Keep Me Informed

