

My products

No Products in your history

My technical documents

No documents in your history

My searches

No Searches in your history

TI Home > Semiconductors > Audio > TPA3116D2 Evaluation Module

Worldwide (In English)

TPA3116D2 Evaluation Module

(ACTIVE) TPA3116D2EVM

[Description & Features](#)
[Technical Documents](#)
[Support & Community](#)
[Order Now](#)

Description

The TPA3116D2 evaluation module consists of a single 50-W, Class-D, stereo audio power amplifier complete with a small number of external components mounted on a circuit board that can be used to directly drive a speaker with an external analog audio source as the input. The EVM's default output filter configuration supports LC filter operation, but can easily be configured to support filter-free operation or micro inductors. The EVM can also be configured as a 100-W, Class-D mono audio power amplifier.

Designers can quickly evaluate the sound quality and verify specifications in their application with the TPA3116D2EVM. In addition, the TPA3116D2EVM User's Guide contains the schematic, layout and bill of materials for a reference design.



TPA3116D2EVM Top View

Features

- Efficient Class-D Operation
- Support for Filter-Free Operation
- SpeakerGuard™ Speaker Protection circuitry
- Four Selectable, Fixed Gain Settings
- Wide Operating Voltage: 4.5 V - 26 V
- Wide Switching Rates 400 kHz - 1.2 MHz
- Switching rate can be synched to an external clock source
- AM Avoidance
- Thermal and Short Circuit Protection with Auto Recovery Feature

Order Now

Part Number	Buy from Texas Instruments or Third Party	Buy from Authorized Distributor	Status	Lead-Free	RoHS	REACH	WEEE	HI-V (>50VRMS/75 VDC)	CE	CE-EMC	CE-RTTE/LVD	FCC	Batteries	Enclosure	Ext Power Supply
TPA3116D2EVM: TPA3116D2 Evaluation Module	\$149.00(USD) In Stock Typically Ships in 1 to 3 Business Days Buy from TI	Pricing may vary. Buy from distributor	ACTIVE	Yes	Yes	Yes	NA	NA	NA	NA	NA	NA	No	No	No

Contact a Distributor

TI's [Standard Terms and Conditions for Evaluation Modules](#) apply.

Technical Documents

Datasheet (2)

Title	Abstract	Type	Size (KB)	Date	Views
TPA3116D2 15-W, 30-W, 50-W Filter-Free Class-D Stereo Amplifier Family With AM Avoidance (Rev. D)		PDF	2116	16 Jan 2015	
15W, 30W, 50W Filter-Free Class D Stereo Amplifiers with AM Avoidance (Rev. A)		PDF	1157	10 May 2012	

User Guides (1)

Title	Abstract	Type	Size (KB)	Date	Views
TPA3116D2 EVM User's Guide (Rev. B)		PDF	4748	20 Dec 2013	1,372

Title	Abstract	Type	Size (KB)	Date	Views
-------	----------	------	-----------	------	-------

Related Products

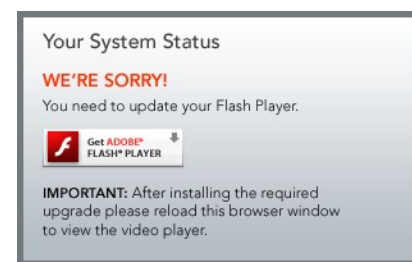
Software (1)

 [TPA3116D2EVM RevC Gerbers](#)
(ZIP, 583 KB) 146 views, 24 Jul 2012

TI Devices (1)

Part Number	Name	Product Family
TPA3116D2	50-W Stereo (BTL) Class-D Audio Amp w/ SpeakerGuard™	Speaker Amplifier and Modulator

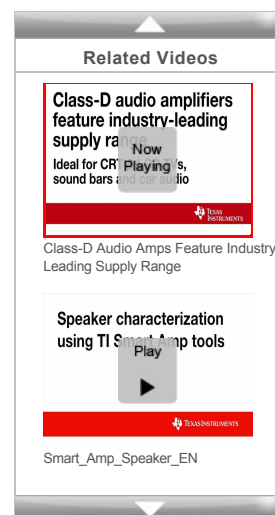
Videos



Class-D Audio Amps Feature Industry-Leading Supply Range

Class-D amplifiers are being designed into all sorts of audio solutions that traditionally used class-AB solutions. However, board space, BOM cost, single-layer PCB support, filter-free operation and high fidelity

Posted: 26-Jun-2012
Duration: 03:35
Views: 3244
Tags: ampse2e, consumer electronics, range, audio, amplifiers & linear, supply, amp, English, Class-D, amplifiers
[Learn more about the TPA31xxD2 audio amplifiers](#)




Support and Community

Wikis

[Visit the TI Wiki](#)

TI E2E™ community



As a member of [my.TI](#) you can join the [TI E2E™ Community](#) where you can ask questions, share ideas and collaborate with fellow engineers and TI experts

Contents are provided "AS IS" by the respective TI and Community contributors and do not constitute TI specifications. See [Terms of use](#).

Engage in the Community

- [Amplifiers](#)
- [Data Converters](#)
- [Logic](#)
- [Broadband RF/IF & Digital Radio](#)
- [DLP® & MEMS](#)
- [Power Management](#)
- [Clocks & Timers](#)
- [Interface](#)
- [Wireless Connectivity](#)

Training & events

Name	Type	Available During
Georgia Tech MOOC: Control of Mobile Robots Learn how to make mobile robots move in effective, safe, predictable, and collaborative ways using modern control theory.	On-Line Training	On Demand
SimpleLink™ Wi-Fi CC3100 and CC3200 Project 0 Series - 5 Part Series Learn about using Software Tools for SimpleLink™ Wi-Fi CC3100 Boosterpack and CC3200 Launchpad	On-Line Training	On Demand
TI-RTOS Update Learn about the latest TI-RTOS features and more in-depth understanding of this TI software tool.	On-Line Training	On Demand
Designing with Ultra Low Power Segmented Displays Learn about designing Ultra-low Power Segmented Displays and MSP430	On-Line Training	On Demand

Customer Tags ?

No Tags are Available for this Part Number

Create a Tag

Other Support

- [TI E2E Community](#)
- [Contact Technical Support](#)

Your History

Products You Recently Viewed

There are no items in your history.