

My products
No Products in your history

My technical documents
No documents in your history

My searches
No Searches in your history

TI Home > Semiconductors > Data Converters > High Speed Data Capture and Pattern Generation Platform

Worldwide (In English)

High Speed Data Capture and Pattern Generation Platform

(ACTIVE) TSW1400EVM

Description & Features

Technical Documents

Support & Community

Order Now

Description

The TSW1400EVM is a complete pattern generator and data capture circuit board used to evaluate most of Texas Instruments' (TI) high speed analog-to-digital converters (ADC) and digital to analog converters (DAC).

The TSW1400EVM features a high speed LVDS bus capable of providing 16-bits of data at 1.5 GSPS. Additionally, the board will support a dual 16-bit CMOS interface that will be enabled in a future firmware upgrade. These two interfaces will allow evaluation for almost all of Texas Instruments' catalog of high speed ADC and DAC evaluation modules at their full data rate. The board comes with 1GB of memory, which provides a 16-bit sample depth of 512 MB. This improved memory enables better FFT frequency resolution and larger capture sizes for more realistic tests. All of this functionality comes at a price that is lower than any other complete solution on the market.

The intuitive/easy-to-use GUI software package was designed using the TSW1400EVM family. It is an easy to use GUI that allows users to conduct time domain tests, single- or multiple-tone frequency tests, and even load their own test patterns. The EVM connects to your computer via a USB cable, and ships with the necessary power adapter.

The TSW1400EVM is compatible with all ADCs and DACs listed in the Related Devices section of this website. If there is any question as to whether or not the TSW1400 supports the device of interest, please ask in the e2e forum for [High Speed Converters](#)



Top View of TSW1400EVM High Speed Data Capture and Pattern Generation Platform

Features

- Complete 16-bit data capture and pattern generation platform for TI's high speed ADC's and DAC's
- Compatible with LVDS-, CMOS-* interfaces (* future firmware upgrade required)
- Analysis on up to 8 simultaneous channels
- Provides 1 GB memory, enabling 512M sample depth
- Support up to 1.5 GSPS LVDS I/O rates for both ADCs and DACs
- Compatible with software for TSW1405 and TSW1406 GUI software
- Altera Stratix IV FPGA
- Integrates functions of TSW1200EVM and TSW3100EVM legacy solutions

Order Now

Part Number	Buy from Texas Instruments or Third Party	Buy from Authorized Distributor	Status	Lead-Free	RoHS	REACH	WEEE	HI-V (>50VRMS/75 VDC)	CE	CE-EMC	CE-RTTE/LVD	FCC	Batteries	Enclosure	Ext Power Supply
TSW1400EVM: High Speed Data Capture and Pattern Generation Platform	\$649.00(USD) In Stock Typically Ships in 1 to 3 Business Days Buy from TI	Pricing may vary. Buy from distributor	ACTIVE	Yes	Yes	NA	NA	NA	NA	NA	NA	No	No	No	Yes

Contact a Distributor

TI's [Standard Terms and Conditions for Evaluation Modules](#) apply.

Technical Documents

User Guides (4)

Title	Abstract	Type	Size (KB)	Date	Views
-------	----------	------	-----------	------	-------

Title	Abstract	Type	Size (KB)	Date	Views
High-Speed Data Converter Pro GUI (Rev. B)		PDF	12109	27 Oct 2014	1,197
TSW140x High Speed Data Capture/Pattern Generator Card (Rev. C)		PDF	6071	20 Dec 2013	1,004
TSW1400 Pattern Generators		PDF	16575	03 May 2012	391
TSW3085EVM ACPR and EVM Measurements (TIDA-00076 Reference Guide)	Read Abstract	PDF	2132	29 Dec 2011	405

Design Files (1)

Title	Abstract	Type	Size (KB)	Date	Views
TSW1400EVM Design Package board rev D		ZIP	13121	24 Jan 2012	336

Related Products

Software (6)

Name	Part Number	Software Type
High Speed Data Converter Pro Software	DATACONVERTERPRO-SW	Software

[High Speed Data Converter Pro GUI Installer, v3.0 \(Rev. K\)](#)
(ZIP, 242502 KB) 883 views, 16 Oct 2014

[HSDC Pro GUI Software Release Notes \(Rev. A\)](#)
(PDF, 296 KB) 134 views, 07 Jul 2014

[HSDC Pro GUI Updates \(Rev. G\)](#)
(ZIP, 0 KB) 92 views, 19 Feb 2014

[Software for Creating High Speed DAC Patterns \(XP Version\)](#)
(ZIP, 448136 KB) 103 views, 12 Jun 2012

[Software for Creating High Speed DAC Patterns \(Win 7 Version\)](#)
(ZIP, 465178 KB) 217 views, 12 Jun 2012

[Show More](#)

Design Kits & Evaluation Modules (102)

Name	Part Number	Tool Type
ADS4122 Evaluation Module	ADS4122EVM	Evaluation Modules & Boards
ADS4125 Evaluation Module	ADS4125EVM	Evaluation Modules & Boards
ADS4126 Evaluation Module	ADS4126EVM	Evaluation Modules & Boards
ADS4129 Evaluation Module	ADS4129EVM	Evaluation Modules & Boards
ADS4142 Evaluation Module	ADS4142EVM	Evaluation Modules & Boards
ADS4145 Evaluation Module	ADS4145EVM	Evaluation Modules & Boards
ADS4146 Evaluation Module	ADS4146EVM	Evaluation Modules & Boards
ADS4149 ADC Evaluation Module	ADS4149EVM	Evaluation Modules & Boards
ADS41B25 Evaluation Module	ADS41B25EVM	Evaluation Modules & Boards
ADS41B29 Evaluation Module	ADS41B29EVM	Evaluation Modules & Boards
ADS41B49 Evaluation Module	ADS41B49EVM	Evaluation Modules & Boards
ADS4222 Evaluation Module	ADS4222EVM	Evaluation Modules & Boards
ADS4225 Evaluation Module	ADS4225EVM	Evaluation Modules & Boards
ADS4226 Evaluation Module	ADS4226EVM	Evaluation Modules & Boards
ADS4229 Evaluation Module	ADS4229EVM	Evaluation Modules & Boards
ADS4242 Evaluation Module	ADS4242EVM	Evaluation Modules & Boards
ADS4245 Evaluation Module	ADS4245EVM	Evaluation Modules & Boards
ADS4246 Evaluation Module	ADS4246EVM	Evaluation Modules & Boards
ADS4249 Evaluation Module	ADS4249EVM	Evaluation Modules & Boards
ADS5242 Evaluation Module	ADS5242EVM	Evaluation Modules & Boards
ADS5281EVM Evaluation Board	ADS5281EVM	Evaluation Modules & Boards
ADS5282EVM Evaluation Module	ADS5282EVM	Evaluation Modules & Boards
ADS5287EVM Evaluation Module	ADS5287EVM	Evaluation Modules & Boards
ADS5400 Evaluation Module	ADS5400EVM	Evaluation Modules & Boards
ADS5440 Evaluation Module	ADS5440EVM	Evaluation Modules & Boards
ADS5444 Evaluation Module	ADS5444EVM	Evaluation Modules & Boards
ADS5463 Evaluation Module	ADS5463EVM	Evaluation Modules & Boards
ADS5474 Evaluation Module	ADS5474EVM	Evaluation Modules & Boards
ADS5481 Evaluation Module	ADS5481EVM	Evaluation Modules & Boards
ADS5482 Evaluation Module	ADS5482EVM	Evaluation Modules & Boards

Name ▲	Part Number ⇅	Tool Type ⇅
ADS5483 Evaluation Module	ADS5483EVM	Evaluation Modules & Boards
ADS5484 Evaluation Module	ADS5484EVM	Evaluation Modules & Boards
ADS54RF63 Evaluation Module	ADS54RF63EVM	Evaluation Modules & Boards
ADS5517 Evaluation Module	ADS5517EVM	Evaluation Modules & Boards
ADS5525 Evaluation Module	ADS5525EVM	Evaluation Modules & Boards
ADS5527 Evaluation Module	ADS5527EVM	Evaluation Modules & Boards
ADS5545 Evaluation Module	ADS5545EVM	Evaluation Modules & Boards
ADS5546 Evaluation Module	ADS5546EVM	Evaluation Modules & Boards
ADS5547 Evaluation Module	ADS5547EVM	Evaluation Modules & Boards
ADS5560 Evaluation Module	ADS5560EVM	Evaluation Modules & Boards
ADS5562 Evaluation Module	ADS5562EVM	Evaluation Modules & Boards
ADS58B18 Evaluation Module	ADS58B18EVM	Evaluation Modules & Boards
ADS58B19 Evaluation Module	ADS58B19EVM	Evaluation Modules & Boards
ADS58C28 Evaluation Module	ADS58C28EVM	Evaluation Modules & Boards
ADS58C48 Evaluation Module	ADS58C48EVM	Evaluation Modules & Boards
ADS6122 Evaluation Module	ADS6122EVM	Evaluation Modules & Boards
ADS6123 Evaluation Module	ADS6123EVM	Evaluation Modules & Boards
ADS6124 Evaluation Module	ADS6124EVM	Evaluation Modules & Boards
ADS6125 Evaluation Module	ADS6125EVM	Evaluation Modules & Boards
ADS6128 Evaluation Board	ADS6128EVM	Evaluation Modules & Boards
ADS6129 Evaluation Board	ADS6129EVM	Evaluation Modules & Boards
ADS6142 Evaluation Module	ADS6142EVM	Evaluation Modules & Boards
ADS6143 Evaluation Module	ADS6143EVM	Evaluation Modules & Boards
ADS6144 Evaluation Module	ADS6144EVM	Evaluation Modules & Boards
ADS6145 Evaluation Module	ADS6145EVM	Evaluation Modules & Boards
ADS6148 Evaluation Board	ADS6148EVM	Evaluation Modules & Boards
ADS6149 Evaluation Board	ADS6149EVM	Evaluation Modules & Boards
ADS6222 Evaluation Module	ADS6222EVM	Evaluation Modules & Boards
ADS6223 Evaluation Module	ADS6223EVM	Evaluation Modules & Boards
ADS6224 Evaluation Module	ADS6224EVM	Evaluation Modules & Boards
ADS6225 Evaluation Module	ADS6225EVM	Evaluation Modules & Boards
ADS6242 Evaluation Module	ADS6242EVM	Evaluation Modules & Boards
ADS6243 Evaluation Module	ADS6243EVM	Evaluation Modules & Boards
ADS6244 Evaluation Module	ADS6244EVM	Evaluation Modules & Boards
ADS6245 Evaluation Module	ADS6245EVM	Evaluation Modules & Boards
ADS62C15 Evaluation Module	ADS62C15EVM	Evaluation Modules & Boards
ADS62C17 Evaluation Module	ADS62C17EVM	Evaluation Modules & Boards
ADS62P15 Evaluation Module	ADS62P15EVM	Evaluation Modules & Boards
ADS62P22 Evaluation Module	ADS62P22EVM	Evaluation Modules & Boards
ADS62P23 Evaluation Module	ADS62P23EVM	Evaluation Modules & Boards
ADS62P24 Evaluation Module	ADS62P24EVM	Evaluation Modules & Boards
ADS62P25 Evaluation Module	ADS62P25EVM	Evaluation Modules & Boards
ADS62P28 Evaluation Module	ADS62P28EVM	Evaluation Modules & Boards
ADS62P29 Evaluation Module	ADS62P29EVM	Evaluation Modules & Boards
ADS62P42 Evaluation Module	ADS62P42EVM	Evaluation Modules & Boards
ADS62P43 Evaluation Module	ADS62P43EVM	Evaluation Modules & Boards
ADS62P44 Evaluation Module	ADS62P44EVM	Evaluation Modules & Boards
ADS62P45 Evaluation Module	ADS62P45EVM	Evaluation Modules & Boards
ADS62P48 Evaluation Module	ADS62P48EVM	Evaluation Modules & Boards
ADS62P49 Evaluation Module	ADS62P49EVM	Evaluation Modules & Boards
ADS6422 Evaluation Module	ADS6422EVM	Evaluation Modules & Boards
ADS6423 Evaluation Module	ADS6423EVM	Evaluation Modules & Boards
ADS6424 Evaluation Module	ADS6424EVM	Evaluation Modules & Boards
ADS6425 Evaluation Module	ADS6425EVM	Evaluation Modules & Boards
ADS6442 Evaluation Module	ADS6442EVM	Evaluation Modules & Boards
ADS6443 Evaluation Module	ADS6443EVM	Evaluation Modules & Boards
ADS6444 Evaluation Module	ADS6444EVM	Evaluation Modules & Boards
ADS6445 Evaluation Module	ADS6445EVM	Evaluation Modules & Boards

Name ▲	Part Number ◆	Tool Type ◆
DAC3152 Evaluation Module	DAC3152EVM	Evaluation Modules & Boards
DAC3162 Evaluation Module	DAC3162EVM	Evaluation Modules & Boards
DAC3482 Evaluation Module	DAC3482EVM	Evaluation Modules & Boards
DAC3484 Evaluation Module	DAC3484EVM	Evaluation Modules & Boards
DAC34H84 Evaluation Module	DAC34H84EVM	Evaluation Modules & Boards
DAC34SH84 Evaluation Module	DAC34SH84EVM	Evaluation Modules & Boards
DAC5675A Evaluation Module	DAC5675AEVM	Evaluation Modules & Boards
DAC5681 Evaluation Module	DAC5681EVM	Evaluation Modules & Boards
DAC5681Z Evaluation Module	DAC5681ZEVM	Evaluation Modules & Boards
DAC5682Z Evaluation Module	DAC5682ZEVM	Evaluation Modules & Boards
Wideband Transmit Signal Chain Evaluation Board & Reference Design	TSW3084EVM	Evaluation Modules & Boards
Wideband Transmit Signal Chain Evaluation Board & Reference Design	TSW30H84EVM	Evaluation Modules & Boards
Wideband Transmit Signal Chain Evaluation Board & Reference Design	TSW3085EVM	Evaluation Modules & Boards
Wideband Transmit Signal Chain Evaluation Board & Reference Design	TSW30SH84EVM	Evaluation Modules & Boards

[Show More](#)

TI Devices (106)

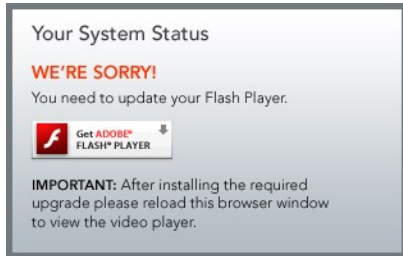
Part Number ◆	Name	Product Family ◆
ADS4122	12 bit 65MSPS Low Power ADC	Analog to Digital Converter
ADS4125	12 bit 125MSPS Low Power ADC	Analog to Digital Converter
ADS4126	12bit 160MSPS Low Power ADC	Analog to Digital Converter
ADS4129	12 bit 250MSPS Low Power ADC	Analog to Digital Converter
ADS4142	14 bit 65MSPS Low Power ADC	Analog to Digital Converter
ADS4145	14 bit 125MSPS Low Power ADC	Analog to Digital Converter
ADS4146	14 bit 160MSPS Low Power ADC	Analog to Digital Converter
ADS4149	14 bit 250MSPS Low Power ADC	Analog to Digital Converter
ADS41B25	12 bit 125MSPS Buffered Low Power ADC	Analog to Digital Converter
ADS41B29	12 bit 250MSPS Buffered Low Power ADC	Analog to Digital Converter
ADS41B49	14 bit 250MSPS Buffered Low Power ADC	Analog to Digital Converter
ADS4222	12 bit 65MSPS Dual Low Power ADC	Analog to Digital Converter
ADS4225	12 bit 125MSPS Dual Low Power ADC	Analog to Digital Converter
ADS4226	12 bit 160MSPS Dual Low Power ADC	Analog to Digital Converter
ADS4229	12-Bit 250MSPS Dual Low Power ADC	Analog to Digital Converter
ADS4242	14 bit 65MSPS Dual Low Power ADC	Analog to Digital Converter
ADS4245	14 bit 125MSPS Dual Low Power ADC	Analog to Digital Converter
ADS4246	14 bit 160MSPS Dual Low Power ADC	Analog to Digital Converter
ADS4249	14-Bit 250MSPS Dual Low Power ADC	Analog to Digital Converter
ADS5242	4-Channel, 12-bit, 65MSPS ADC with Serial LVDS Interface	Analog to Digital Converter
ADS5281	Low Power 8-Channel, 12-Bit, 50MSPS ADC with Serialized LVDS Interface	Analog to Digital Converter
ADS5282	Low Power 8-Channel, 12-Bit, 65MSPS ADC with Serialized LVDS Interface	Analog to Digital Converter
ADS5287	Low Power 8-Channel, 10-Bit, 65MSPS ADC with Serialized LVDS Interface	Analog to Digital Converter
ADS5400	12-bit, 1000 MSPS ADC with analog input buffer	Analog to Digital Converter
ADS5411	11bit 105MSPS Analog-to-Digital Converter	Analog to Digital Converter
ADS5423	A 5V 14bit, 80MSPS Analog-to-Digital Converter	Analog to Digital Converter
ADS5424	5V 14bit, 105MSPS High Performance Bipolar Analog-to-Digital Converter	Analog to Digital Converter
ADS5440	13 Bit, 210MSPS Pipeline ADC	Analog to Digital Converter
ADS5444	13 Bit, 250MSPS ADC	Analog to Digital Converter
ADS5463	12-bit, 500 MSPS Analog-to-Digital Converter with Buffered Input	Analog to Digital Converter
ADS5474	14-bit, 400 MSPS Analog-to-Digital Converter with Buffered Input	Analog to Digital Converter
ADS5481	16-bit 80MSPS ADC With Buffered Analog Input	Analog to Digital Converter
ADS5482	16-bit, 105MSPS High Speed ADCs	Analog to Digital Converter
ADS5483	16-bit 135MSPS ADC with buffered inputs	Analog to Digital Converter
ADS5484	16-bit, 170 MSPS ADC with buffered inputs	Analog to Digital Converter
ADS5485	16-bit, 200 MSPS ADC with buffered inputs	Analog to Digital Converter
ADS54RF63	12-bit, 550 MSPS ADC with Buffered Input and RF Input Sampling Ability	Analog to Digital Converter
ADS5517	11-Bit, 200 MSPS ADC With DDR LVDS/CMOS Outputs	Analog to Digital Converter
ADS5525	12-bit, 170 MSPS ADC with User selectable DDR LVDS or Parallel CMOS outputs	Analog to Digital Converter

Part Number ↕	Name ↕	Product Family ↕
ADS5527	12-bit, 210MSPS ADC with DDR LVDS/CMOS outputs	Analog to Digital Converter
ADS5545	14-bit 170 MSPS ADC with LVDS/CMOS Outputs	Analog to Digital Converter
ADS5546	14-Bit 190 MSPS ADC With User-Selectable DDR LVDS or CMOS Parallel Outputs	Analog to Digital Converter
ADS5547	14-Bit 210 MSPS ADC With User-Selectable DDR LVDS or CMOS Parallel Outputs	Analog to Digital Converter
ADS5560	16-bit 40MSPS Low Power ADC with Selectable LVDS/CMOS Outputs	Analog to Digital Converter
ADS5562	16-bit 80MSPS Low Power ADC with Selectable LVDS/CMOS Outputs	Analog to Digital Converter
ADS58B18	11 bit 200MSPS Buffered ADC with SNRBoost	Analog to Digital Converter
ADS58B19	9-bit 250MSPS Buffered ADC with SNRBoost	Analog to Digital Converter
ADS58C28	Dual 11-Bit 200MSPS ADC with SNRBoost	Analog to Digital Converter
ADS58C48	Quad 11-Bit 200MSPS ADC with SNRBoost	Analog to Digital Converter
ADS6122	Low Power 12-bit 65MSPS ADC with selectable parallel CMOS or LVDS outputs	Analog to Digital Converter
ADS6123	Low Power 12-bit 80MSPS ADC with selectable parallel CMOS or LVDS outputs	Analog to Digital Converter
ADS6124	Low Power 12-bit 105MSPS ADC with selectable parallel CMOS or LVDS outputs	Analog to Digital Converter
ADS6125	Low Power 12-bit 125MSPS ADC with selectable parallel CMOS or LVDS outputs	Analog to Digital Converter
ADS6128	Low power 12-bit, 210 MSPS ADC	Analog to Digital Converter
ADS6129	Low power 12-bit, 250 MSPS ADC	Analog to Digital Converter
ADS6142	Low Power 14-bit 65MSPS ADC with selectable parallel CMOS or LVDS outputs	Analog to Digital Converter
ADS6143	Low Power 14-bit 80MSPS ADC with selectable parallel CMOS or LVDS outputs	Analog to Digital Converter
ADS6144	Low Power 14-bit 105MSPS ADC with selectable parallel CMOS or LVDS outputs	Analog to Digital Converter
ADS6145	Low Power 14-bit 125MSPS ADC with selectable parallel CMOS or LVDS outputs	Analog to Digital Converter
ADS6148	Low power 14-bit, 210 MSPS ADC	Analog to Digital Converter
ADS6149	Low power 14-bit, 250 MSPS ADC	Analog to Digital Converter
ADS6222	Dual 12-bit 65MSPS ADC with serialized LVDS Output	Analog to Digital Converter
ADS6223	Dual 12-bit 80MSPS ADC with serialized LVDS output	Analog to Digital Converter
ADS6224	Dual 12-bit 105MSPS ADC with serialized LVDS output	Analog to Digital Converter
ADS6225	Dual 12-bit 125MSPS ADC with serialized LVDS output	Analog to Digital Converter
ADS6242	Dual 14-bit 65MSPS ADC with serialized LVDS Output	Analog to Digital Converter
ADS6243	Dual 14-bit 80MSPS ADC with serialized LVDS output	Analog to Digital Converter
ADS6244	Dual 14-bit 105MSPS ADC with serialized LVDS output	Analog to Digital Converter
ADS6245	Dual 14-bit 125MSPS ADC with serialized LVDS output	Analog to Digital Converter
ADS62C15	Dual Channel 11-Bits, 125 MSPS ADC With SNRBoost	Analog to Digital Converter
ADS62C17	Dual Channel 11 Bit, 200 MSPS ADC with SNRBoost	Analog to Digital Converter
ADS62P15	Dual Channel 11-Bits, 125 MSPS ADC With Parallel CMOS/DDR LVDS Outputs	Analog to Digital Converter
ADS62P22	Dual 12-bit 65MSPS ADC with selectable DDR LVDS or CMOS outputs	Analog to Digital Converter
ADS62P23	Dual 12-bit 80MSPS ADC with selectable DDR LVDS or CMOS outputs	Analog to Digital Converter
ADS62P24	Dual 12-bit 105MSPS ADC with selectable DDR LVDS or CMOS outputs	Analog to Digital Converter
ADS62P25	Dual 12-bit 125MSPS ADC with selectable DDR LVDS or CMOS outputs	Analog to Digital Converter
ADS62P28	Dual Channel 12 Bit, 210 MSPS ADC with DDR LVDS & Parallel CMOS outputs	Analog to Digital Converter
ADS62P29	Dual Channel 12 Bit, 250 MSPS ADC with DDR LVDS & Parallel CMOS outputs	Analog to Digital Converter
ADS62P42	Dual 14-bit 65MSPS ADC with selectable DDR LVDS or CMOS outputs	Analog to Digital Converter
ADS62P43	Dual 14-bit 80MSPS ADC with selectable DDR LVDS or CMOS outputs	Analog to Digital Converter
ADS62P44	Dual 14-bit 105MSPS ADC with selectable DDR LVDS or CMOS outputs	Analog to Digital Converter
ADS62P45	Dual 14-bit 125MSPS ADC with selectable DDR LVDS or CMOS outputs	Analog to Digital Converter
ADS62P48	Dual Channel 14 Bit, 210 MSPS ADC with DDR LVDS & Parallel CMOS outputs	Analog to Digital Converter
ADS62P49	Dual Channel 14 Bit, 250 MSPS ADC with DDR LVDS & Parallel CMOS outputs	Analog to Digital Converter
ADS6422	Quad 12-bit 65MSPS ADC with serialized LVDS output	Analog to Digital Converter
ADS6423	Quad 12-bit 80MSPS ADC with serialized LVDS output	Analog to Digital Converter
ADS6424	Quad 12-bit 105MSPS ADC with serialized LVDS output	Analog to Digital Converter
ADS6425	Quad 12-bit 125MSPS ADC with serialized LVDS output	Analog to Digital Converter
ADS6442	Quad 14-bit 65MSPS ADC with serialized LVDS output	Analog to Digital Converter
ADS6443	Quad 14-bit 80MSPS ADC with serialized LVDS output	Analog to Digital Converter
ADS6444	Quad 14-bit 105MSPS ADC with serialized LVDS output	Analog to Digital Converter
ADS6445	Quad 14-bit 125MSPS ADC with serialized LVDS output	Analog to Digital Converter
AFE7070	Integrated NCO, Dual 14-bit 65MSPS DAC, RF IQ Modulator and LVDS output option	Analog Front End (AFE)
AFE7222	Dual 12-Bit, 65 MSPS ADC with dual 12-Bit, 130 MSPS DAC and auxilliary ADC and DACs	Analog Front End (AFE)
AFE7225	Dual 12-Bit, 125 MSPS ADC with dual 12-Bit, 250 MSPS DAC and auxilliary ADC and DACs	Analog Front End (AFE)
DAC3152	Dual-Channel, 10-/12-Bit, 500-MSPS Digital-to-Analog Converters (DACs)	Digital to Analog Converter
DAC3162	Dual-Channel, 10-/12-Bit, 500-MSPS Digital-to-Analog Converters (DACs)	Digital to Analog Converter

Part Number ↕	Name	Product Family ↕
DAC3482	2-channel 16-bit 1.25GSPS Digital-to-Analog Converter	Digital to Analog Converter
DAC3484	4-channel 16-bit 1.25GSPS Digital-to-Analog Converter	Digital to Analog Converter
DAC34H84	4-channel 16-bit 1.25GSPS Digital-to-Analog Converter	Digital to Analog Converter
DAC34SH84	Quad-Channel, 16-Bit, 1.5 GSPS Digital-to-Analog Converter (DAC) .	Digital to Analog Converter
DAC5681	16-Bit, 1.0 GSPS Digital-To-Analog Converter (DAC)	Digital to Analog Converter
DAC5681Z	16-Bit, 1.0 GSPS 2x-4x Interpolating Digital-To-Analog Converter (DAC)	Digital to Analog Converter
DAC5682Z	16-Bit, 1.0 GSPS 2x-4x Interpolating Dual-Channel Digital-To-Analog Converter (DAC)	Digital to Analog Converter
DAC5686	16 Bit 500 MSPS Dual DAC, 16x interpolation, high-performance	Digital to Analog Converter
DAC5687	16-bit, 500 MSPS 2x-8x Interpolating Dual-Channel Digital-to-Analog Converter (DAC)	Digital to Analog Converter

[Show More](#)

Videos



Basic features for the ADC portion of the TSW1400EVM

High Speed Data Capture and Pattern Generation Platform: The TSW1400EVM is a complete pattern generator and data capture circuit board used to evaluate most of Texas Instruments' (TI) high speed

Posted: 17-Feb-2012
Duration: 02:25
Views: 64
Tags: tl_8094, tl_8092, tl_8093

Related Videos

Basic GUI features for a high speed ADC and the TSW1400EVM

Now Playing

Texas Instruments

Basic features for the ADC portion of the TSW1400EVM

Advanced features for the DAC portion of the TSW1400 GUI

Now Playing

Texas Instruments

Advanced features of the DAC portion of the TSW1400 GUI

Support and Community

Wikis

[Visit the TI Wiki](#)

TI E2E™ community

TI E2E™ Community

As a member of [my.TI](#) you can join the [TI E2E™ Community](#) where you can ask questions, share ideas and collaborate with fellow engineers and TI experts

Contents are provided "AS IS" by the respective TI and Community contributors and do not constitute TI specifications. See [Terms of use](#).

Engage in the Community

• [Amplifiers](#)

• [Data Converters](#)

• [Logic](#)

• [Broadband RF/IF & Digital Radio](#)

• [DLP® & MEMS](#)

• [Power Management](#)

• [Clocks & Timers](#)

• [Interface](#)

• [Wireless Connectivity](#)

Training & events

Name	Type	Available During
Georgia Tech MOOC: Control of Mobile Robots Learn how to make mobile robots move in effective, safe, predictable, and collaborative ways using modern control theory.	On-Line Training	On Demand
SimpleLink™ Wi-Fi CC3100 and CC3200 Project 0 Series - 5 Part Series Learn about using Software Tools for SimpleLink™ Wi-Fi CC3100 Boosterpack and CC3200 Launchpad	On-Line Training	On Demand
TI-RTOS Update Learn about the latest TI-RTOS features and more in-depth understanding of this TI software tool.	On-Line Training	On Demand
Designing with Ultra Low Power Segmented Displays Learn about designing Ultra-low Power Segmented Displays and MSP430	On-Line Training	On Demand

Customer Tags

No Tags are Available for this Part Number

Create a Tag

Other Support

- [TI E2E Community](#)
- [Contact Technical Support](#)

Your History

Products You Recently Viewed

There are no items in your history.